



THE LIBRARY  
OF  
THE UNIVERSITY  
OF CALIFORNIA  
DAVIS



1  
2  
3  
4  
5  
6  
7  
8  
9  
10  
11  
12  
13  
14  
15  
16  
17  
18  
19  
20  
21  
22  
23  
24  
25  
26  
27  
28  
29  
30  
31  
32  
33  
34  
35  
36  
37  
38  
39  
40  
41  
42  
43  
44  
45  
46  
47  
48  
49  
50  
51  
52  
53  
54  
55  
56  
57  
58  
59  
60  
61  
62  
63  
64  
65  
66  
67  
68  
69  
70  
71  
72  
73  
74  
75  
76  
77  
78  
79  
80  
81  
82  
83  
84  
85  
86  
87  
88  
89  
90  
91  
92  
93  
94  
95  
96  
97  
98  
99  
100





---

---

STATE OF CALIFORNIA  
DEPARTMENT OF PUBLIC WORKS

— 0 —

FRANK F. MERRIAM, Governor  
EARL LEE KELLY, Director of Public Works

---

---

DIVISION OF WATER RESOURCES  
BULLETIN NO. 21-G

REPORT  
ON  
I R R I G A T I O N   D I S T R I C T S  
IN  
CALIFORNIA

FOR THE YEAR 1935



1  
2  
3  
4  
5  
6  
7  
8  
9  
10  
11  
12  
13  
14  
15  
16  
17  
18  
19  
20  
21  
22  
23  
24  
25  
26  
27  
28  
29  
30  
31  
32  
33  
34  
35  
36  
37  
38  
39  
40  
41  
42  
43  
44  
45  
46  
47  
48  
49  
50  
51  
52  
53  
54  
55  
56  
57  
58  
59  
60  
61  
62  
63  
64  
65  
66  
67  
68  
69  
70  
71  
72  
73  
74  
75  
76  
77  
78  
79  
80  
81  
82  
83  
84  
85  
86  
87  
88  
89  
90  
91  
92  
93  
94  
95  
96  
97  
98  
99  
100



TABLE OF CONTENTS

---

	<u>Page</u>
ORGANIZATION - - - - -	3
FOREWORD - - - - -	4
DIRECTORY OF DISTRICTS - - - - -	5
CHAPTER I	
INTRODUCTION	
The 1935 Irrigation Season - - - - -	8
Farm Operations - - - - -	8
New Legislation - - - - -	9
Irrigation Districts Association - - - - -	10
CHAPTER II	
FINANCIAL REVIEW	
Refinancing Progress - - - - -	11
Districts Securities Commission - - - - -	12
District Finances - - - - -	14
CHAPTER III	
DISTRICT ORGANIZATIONS	
Irrigation Districts - - - - -	15
Water Storage Districts - - - - -	15
North Kern Water Storage District - - - - -	16
CHAPTER IV	
STATISTICAL INFORMATION	
Source of Supply, Storage and Distribution of Water - - - - -	19
Irrigation District Crop Summary - - - - -	20
Assessments, Water Tolls and Other Revenues - - - - -	20
Bonds and Warrants - - - - -	21
Outstanding Bonds per Acre - - - - -	23
TABLES OF STATISTICAL DATA	
I Data on Water Supply - - - - -	25
II Crop Report for 1935 - - - - -	27
III Summary of Assessments, Water Tolls, Delinquencies - - - - -	29
IV Data Relating to Bonds and Warrants - - - - -	31
V Year Formed, Area and Bond Obligations per Acre - - - - -	36

1  
2  
3  
4  
5  
6  
7  
8  
9  
10  
11  
12  
13  
14  
15  
16  
17  
18  
19  
20  
21  
22  
23  
24  
25  
26  
27  
28  
29  
30  
31  
32  
33  
34  
35  
36  
37  
38  
39  
40  
41  
42  
43  
44  
45  
46  
47  
48  
49  
50  
51  
52  
53  
54  
55  
56  
57  
58  
59  
60  
61  
62  
63  
64  
65  
66  
67  
68  
69  
70  
71  
72  
73  
74  
75  
76  
77  
78  
79  
80  
81  
82  
83  
84  
85  
86  
87  
88  
89  
90  
91  
92  
93  
94  
95  
96  
97  
98  
99  
100

ORGANIZATION

FRANK F. MERRIAM - - - - - Governor of California  
EARL LEE KELLY - - - - - Director of Public Works  
EDWARD HYATT - - - - - State Engineer

\_\_\_\_\_ 0 \_\_\_\_\_

Previous bulletins of this series and initial work  
on the present issue were under the direction of

\*A. N. BURCH - - - - - Supervising Hydraulic Engineer

This report was compiled by

J. H. PEASLEE - - - - - Associate Hydraulic Engineer

Assisted by

A. WHITE - - - - - Delineator

\_\_\_\_\_ 0 \_\_\_\_\_

J. J. HALEY, JR. Administrative Assistant

\_\_\_\_\_ 0 \_\_\_\_\_

\*Deceased February 21, 1936

1  
2  
3  
4  
5  
6  
7  
8  
9  
10  
11  
12  
13  
14  
15  
16  
17  
18  
19  
20  
21  
22  
23  
24  
25  
26  
27  
28  
29  
30  
31  
32  
33  
34  
35  
36  
37  
38  
39  
40  
41  
42  
43  
44  
45  
46  
47  
48  
49  
50  
51  
52  
53  
54  
55  
56  
57  
58  
59  
60  
61  
62  
63  
64  
65  
66  
67  
68  
69  
70  
71  
72  
73  
74  
75  
76  
77  
78  
79  
80  
81  
82  
83  
84  
85  
86  
87  
88  
89  
90  
91  
92  
93  
94  
95  
96  
97  
98  
99  
100

## FOREWORD

---

Following the publication of Bulletin No. 21, entitled "Irrigation Districts in California", 1929, a series of annual reports have been issued by the Division of Water Resources for the purpose of bringing up to date, at the close of each year, the historical and statistical information compiled on these active organizations. The present Bulletin, No. 21-G is the eighth publication of this series and presents the data collected for the year 1935. Material for the bulletin has been obtained largely from annual reports of the individual irrigation districts and from the department files. Figures have been carefully checked and analyzed and are believed to be substantially correct, although there may be inaccuracies in certain cases. An expression of appreciation is extended by this office to the irrigation district officials and to others who assisted in gathering the information.

1  
2  
3  
4  
5  
6  
7  
8  
9  
10  
11  
12  
13  
14  
15  
16  
17  
18  
19  
20  
21  
22  
23  
24  
25  
26  
27  
28  
29  
30  
31  
32  
33  
34  
35  
36  
37  
38  
39  
40  
41  
42  
43  
44  
45  
46  
47  
48  
49  
50  
51  
52  
53  
54  
55  
56  
57  
58  
59  
60  
61  
62  
63  
64  
65  
66  
67  
68  
69  
70  
71  
72  
73  
74  
75  
76  
77  
78  
79  
80  
81  
82  
83  
84  
85  
86  
87  
88  
89  
90  
91  
92  
93  
94  
95  
96  
97  
98  
99  
100

DIRECTOR OF CALIFORNIA IRRIGATION DISTRICTS  
JANUARY 1, 1936

Name of District	County	Estimated Population		District Officials			Office Address
		Inside Cities and Towns	Outside Cities and Towns	President	Secretary	Manager or Engineer	
Alpaugh	Tulare	7,000	300	H. E. Sawyer	Mary B. P. Vallance	Paul Caldwell	Box 67, Alpaugh
Alta	Tulare, Fresno, Kings	1,200	18,000	W. H. Sillingslea	E. Sibley	E. Sibley	298 North L Street, Dinuba
Anderson-Cottonwood	Shasta, Tehama	1,200	2,000	W. W. Trent	Carl F. Eaton	Clyde Smith	Anderson
Banta-Carbona	San Joaquin	600	1,600	F. D. Royer	Elvera Draper	J. B. Knight	Drawer L, Tracy
Bard (part of Yuma U.S. Project)	Imperial	1,200	2,000	S. W. Colby	David W. Dow	R. F. D. #2, Yuma, Arizona	
Baxter Creek	Lassen	166	166	Alfred Leonard	Harry S. Riddell	Harry S. Riddell	810 Lassen Street, Susanville
Beaumont	Riverside	2,100	500	Philip Truby	R. D. Sahli	H. S. Murphy	137 5th Street, Beaumont
Big Springs	Siakiyou	200	200	Lloyd Fleisoh	Roy M. Sargent	Post Office Box 271, Montague	
Big Valley	Lassen and Modoc	76	76	H. C. Jack	A. W. McKenzie	Eieher	
Browns Valley	Yuba	1,000	1,000	B. J. Cutler	Ray C. Burris	L. E. Gurney	Browns Valley
Butte Valley	Siakiyou	350	100	H. L. Nelson	M. A. Gilmer	Macdoel	
Gyron-Bethany	Contra Costa	300	600	Coc. K. Anderson	G. A. Howard	Syron	
Camp Far West	Placer, Yuba	125	125	H. Durst	Robert Anderson	Whealand	
Carmichael	Sacramento	1,000	1,000	E. M. Lynch	Roy W. Sullivan	Whealand	
Carpenter	Orange	900	1,050	L. W. Evans	D. S. Smiley	Porter A. Price	Rt. 5, Box 1427, Sacramento
Citrus Heights	Sacramento, Placer	980	980	J. A. Gray	Floyd J. Lecher	R. A. Porch	Rt. 1, Box 161, Roseville
Compton-Delavan	Colusa	24	24	W. C. Baber	C. E. Ryan	C. E. Ryan	475 Montgomery Street, San Francisco
Consolidated	Fresno, Tulare, Kings	9,500	18,000	L. C. Darling	A. R. Steiman	I. H. Tillman	Selma
Corcoran	Kings	1,500	1,500	J. M. Hanson	D. I. Brown	H. R. Bolley	Corcoran
Cordua	Yuba	55	55	C. E. Kibbe	Jeanette Frank		Memorial Auditorium, Marysville
Deer Creek	Tehama	50	50	Charles Dicus	Mabel Hall		
East Contra Costa	Contra Costa	400	800	Arthur H. Honneger	Margaret Wallace	G. H. Josee	Suite 1, 304 Broadway, Chico
El Camilo	Tehama	604	604	G. Grootveld	Roy Pyle	Stenswood	Carber
El Dorado	El Dorado	2,500	3,700	W. A. Rantz	F. H. Hosking	F. N. Hosking	Box 308, Placerville
El Nido	Merced	300	300	Geo. T. McFarland	A. L. Cowell	G. E. Winton	El Nido
Empire West Side	Kings	42	42	J. R. Newton	E. P. Fooy		P.O. Box 133, Stratford
Fair Oaks	Sacramento	500	1,500	R. C. Phoenix	Guy L. Camden	E. E. Fulton	Fair Oaks
Fallbrook	San Diego	1,342	1,342	Raymond Wayman	Agnes K. Walker		Fallbrook
Fresno	Fresno	50,000	50,000	A. B. Tarpey	Mrs. Jewel War	Geo. L. Swendsen	1001-9 Griffith-MacKenzie Bldg., Fresno
Glenn-Colusa	Glenn, Colusa	1,750	1,750	S. S. Havenor	H. R. Allard	R. S. Edwards	Willows
Grenada	Siakiyou	100	230	C. J. Strong	James M. Allen	G. Inabnit	Grenada
Hollister	San Benito	3,500	8,500	R. C. Macaohlan	Thomas O'Donnell	Hollister	Hollister
Hot Spring Valley	Modoc	250	250	S. S. Kelley	A. K. Wylie	S. B. Kelley	Alturas
Imperial	Imperial	30,427	60,903	Evan T. Hoves	W. W. Goodson	M. J. Dowd	El Centro
Island No. 3	Kings	300	300	J. B. Roberts	Mrs. Nellie Kaiser		Kingsburg
Jacinto	Glenn	325	325	W. W. Koehler	Roscoe Caldwell		Glenn
James	Fresno	175	175	Peter Rusconi	N. D. Ingham		San Joaquin
La Canada	Los Angeles	1,000	1,000	Dan W. Green	F. E. Sluتمان	W. N. Carpenter	4711 Castle Road, La Canada
La Grana	Fresno, Kings	3,000	3,000	J. T. Earcy	Seaside L. Soutt	A. J. Nielsen	Rt. 1, Box 197, Laton
Lakeland	Kings	15	15	B. F. Libby	R. S. Harlbut	R. F. Libby	Box 907, Corcoran
Lakeside	San Diego	200	200	B. J. Conrad	R. P. Schiller	R. P. Schiller	Lakeside
La Mesa, Lemon Grove and Sp. Val.	Kings	4,000	8,000	W. S. Satty	Ruth C. Drew	C. Harritt	4769 Spring Street, La Mesa
Lemoore	Kings	1,500	1,500	T. S. Winger	A. L. Cowell		Lemoore
Linden	San Joaquin	150	650	Ralph G. Houston	A. L. Cowell	Frank Davis	911 California Building, Stockton
Lindsay-Strathmore	Tulare	40	1,540	Ernest L. Danfills	E. R. Hubert	Geo. W. Trauger	P.O. Box 625, Lindsay
Little Rock Creek	Los Angeles	200	200	Vernon A. Carr	R. S. Primer		Little Rock
Lucerne	Kings	1,200	1,200	W. L. Haug	S. E. Raliback		Hanford
Madera	Madera	7,000	13,000	T. S. Coffe	Harry Barnes		120 So. D Street, Madera
Maxwell	Colusa	6,000	12	Joe Garibaldi	Thos. S. Hately		1714 10th Street, Sacramento
Merced	Merced	10,000	20,000	D. K. Barnell	H. B. Sargent	L. W. Resse	P.O. Box 759, Merced
Modesto	Stanislaus	17,500	6,500	J. S. West	C. S. Abbott	R. M. Cecil	823 11th Street, Modesto

1911

1911



DIRECTORY OF CALIFORNIA IRRIGATION DISTRICTS (Continued)

JANUARY 1, 1936

Name of District	County	Estimated Population			District Officials			Office Address
		Inside Cities and Towns	Outside Cities and Towns	Total	President	Secretary	Manager or Engineer	
Mojave River	San Bernardino	100	100	200	T. J. Thomae	J. S. Matton	W. E. Fussing	518 E. 10th Street, Upland Montague, Box 272
Montague	San Joaquin	400	150	550	G. W. Dwinell	Roy E. Swigart		Roberts Building, Tracy
Maglic-Burk	San Joaquin	150	150	300	V. J. Reeve	George Wadsworth		144 S. Auburn St., Grass Valley
Newada	Nevada, Placer	5,000	5,000	10,000	Thos. Mulcahy	Mrs. B. W. Baldwin	Wm. Durrow	1856 Newport Boulevard, Costa Mesa
Newport Heights	Orange	1,700	1,700	3,400	Geo. A. Waterman	L. R. Daughanbaugh		
Newport Mesa	Orange	350	350	700	Chas. W. Tewinkle	D. J. Dudge		Box 350, Costa Mesa
Oakdale	Stanislaus, San Joaquin	2,500	4,900	7,400	R. B. McMath	H. M. Tennant	R. E. Hartley	Oakdale
Oroville	Butte	400	450	850	Carleton Gray	W. J. Monro	R. C. Tyler	Oroville
Owens Valley	Inyo	1,500	1,000	2,500	B. E. Johnson	Deil Yandall		Bishop
Palmdale	Los Angeles	660	140	800	E. P. Meulton	R. P. Schoeller	H. P. Schoeller	Palmdale
Palo Verde	Riverside	1,500	3,000	4,500	L. A. Hauser	R. E. Ehlers	C. P. Mahoney	Box 38, Blythe
Paradise	Butte	200	2,900	3,100	L. P. Fisher	J. B. Thompson	J. E. Thompson	Paradise
Potter Valley	Merced	450	450	900	J. E. March	Fred A. Bosworth		Potter Valley
Princeton-Cody-Glenn	Colusa, Glenn	250	750	1,000	M. H. McAuslan	W. G. Poage	R. L. Burke	Princeton
Provident	Glenn, Colusa	150	150	300	Chas. Clark	L. M. Benoit	T. E. Balch	Willits
Ramona	San Diego	900	900	1,800	Clara K. Graham	Ruby Bargar	J. C. Bargar	Ramona
Red Rock Creek	Laschen	122	100	222	John K. Eneboe	Alvin L. Barry	Alvin L. Barry	Susanville
Richvale	Butte	2,500	2,500	5,000	J. E. Baker	Tina Z. Casman		Richvale
Riverdale	Fresno	1,500	1,500	3,000	L. P. Adams	Caroline Aroularius		Riverdale
Round Valley	Inyo, Mono	700	700	1,400	A. Roberts			Bishop
San Diego	San Diego	800	1,600	2,400	L. P. McChesney	F. R. Tolle	F. R. Tolle	Box 207, Enolitas
Santa Fe	San Diego	560	240	800	Ira E. Conner	W. O. Boettiger	W. O. Boettiger	Rancho Santa Fe
San Ysidro	San Diego	1,500	1,500	3,000	L. McKelvey	L. Judd		San Ysidro
Scott Valley	Siakiyou	300	300	600	C. F. Bryan	W. D. Mathews		Fort Jones
Serrano	Orange	700	700	1,400	Willard Smith	F. H. Collins		R.F.D. 1, Box 860, Orange
South Fork	Modoc	60	60	120	D. E. Van Loan	C. S. Baldwin	S. A. Mushen	Alturas
South Montebello	Los Angeles	950	10,000	10,950	Al C. Cook	Mabel E. Kennedy	W. S. Dunan	Rt. 1, Box 1110, Montebello
Stanton	San Joaquin	4,000	50	4,050	H. E. Wolf	S. L. Steele	George K. Parker	Manteca
Stratford	Fresno	175	175	350	Wm. H. Noble	J. F. Davis	W. I. Bryant	Barred, Fresno County
Tale Mountain	Butte	200	200	400	Ralph Christenson	Kahryne Reese	C. C. Reese	Oroville
Terra Bella	Butte	1,200	1,200	2,400	John A. Rowe	E. H. Robinson	L. H. Althouse	P.O. Box 125, Terra Bella
Thermalito	Butte	150	150	300	J. Rodgers	Robert L. Townsend	W. E. Taylor	Oroville
Tracy-Clover	San Joaquin	175	175	350	Frank Whiting	George Wadsworth		Roberts Building, Tracy
Tranquillity	Fresno	6,000	6,000	12,000	F. E. Miller	Iva Johnson		Tranquillity
Tulare	Tulare	7,000	19,000	26,000	E. A. Beeseltine	Glenn Moran	C. R. Slaughter	P.O. Box 477, Tulare
Tulare	Laschen	150	150	300	C. Farrell	Ray Finley	Bary S. Riddell	Susanville
Turlock	Stanislaus and Merced	675	2,443	3,118	D. C. Thornburg	Wm. Sorenson	R. V. Maikie	117 W. Main Street, Turlock
Vandalia	Tulare	450	1,500	1,950	Walter D. Emery	E. C. Pegram	I. R. Althouse	Box 1026, Porterville
Vista	San Diego	300	900	1,200	J. W. Rose	W. C. Bissinger	Chas. N. Bell	Vista
Walnut	Los Angeles	300	300	600	F. C. Collins	E. D. Crouch	W. Lemuhl	Rivera
Waterford	Stanislaus	450	300	750	E. Whitney	C. W. Quinley		Waterford
West Side	San Joaquin	1,067	50	1,117	B. R. Santa	Wassy R. Hansen	W. F. Woolley	Roberts Building, Tracy
West Stanislaus	Stanislaus, Merced	450	300	750	W. W. Cox	Elbridge Smith		Westley
Woodbridge	San Joaquin	200	200	400	E. J. Shinn	Olla L. Strother	Elton J. Strother	Rt. 2, Box 67, Lodi
Totals, irrigation districts		130,852	227,804	360,663				

DIRECTORY CALIFORNIA WATER STORAGE DISTRICTS

<p>Butte Huron Dakota</p>	<p>Butte Huron Dakota</p>	<p>Butte Huron Dakota</p>	<p>Butte Huron Dakota</p>	<p>Butte Huron Dakota</p>	<p>Butte Huron Dakota</p>	<p>Butte Huron Dakota</p>	<p>Butte Huron Dakota</p>	<p>Butte Huron Dakota</p>	<p>Butte Huron Dakota</p>
<p>Butte Huron Dakota</p>	<p>Butte Huron Dakota</p>	<p>Butte Huron Dakota</p>	<p>Butte Huron Dakota</p>	<p>Butte Huron Dakota</p>	<p>Butte Huron Dakota</p>	<p>Butte Huron Dakota</p>	<p>Butte Huron Dakota</p>	<p>Butte Huron Dakota</p>	<p>Butte Huron Dakota</p>



## CHAPTER I

### INTRODUCTION

#### The 1935 Irrigation Season

The year 1935 was very favorable for the growing and harvesting of most California crops. The total precipitation was 94 per cent, and the total snowfall 128 per cent of the 39-year average. Water for irrigation was ample, and soil moisture conditions were generally sufficient for those areas producing dryland crops. On the whole the generous rainfall was well distributed, resulting in an abundance of range and pasture feed over the entire state. Spring and early summer temperatures were colder than usual, and vegetation received a late start. Vegetable crops matured two or three weeks later than during the preceding year. Late spring frosts of considerable consequence occurred in some localities at a time when trees were in blossom. No excessive periods of high temperature occurred during the summer, and conditions were generally favorable for crop development.

#### Farm Operations

A continued marked improvement over previous years was indicated by review of the California cooperative crop reports for 1935. In the fruit and nut industries, for the State as a whole, both the tonnage produced and the returns received were greater than for 1934. Production increased 7%, and while the average price per ton obtained was somewhat less than 1934, it was greater than any other previous year since 1929.

1  
2  
3  
4  
5  
6  
7  
8  
9  
10  
11  
12  
13  
14  
15  
16  
17  
18  
19  
20  
21  
22  
23  
24  
25  
26  
27  
28  
29  
30  
31  
32  
33  
34  
35  
36  
37  
38  
39  
40  
41  
42  
43  
44  
45  
46  
47  
48  
49  
50  
51  
52  
53  
54  
55  
56  
57  
58  
59  
60  
61  
62  
63  
64  
65  
66  
67  
68  
69  
70  
71  
72  
73  
74  
75  
76  
77  
78  
79  
80  
81  
82  
83  
84  
85  
86  
87  
88  
89  
90  
91  
92  
93  
94  
95  
96  
97  
98  
99  
100

The year was very favorable also for the growing, maturing and harvesting of field crops, which showed a gain of 9.5% in acres harvested; 17% in tons produced; and 1.4% in farm values. The average value per ton was somewhat less in 1935 than was estimated for 1934, but was greater than that received in 1933.

The acreage of truck crops increased 6.8% over the previous year. Yields were generally lighter than 1934 due to prevailing cool weather conditions. Prices started off well but slumped during the summer and fall months. Average prices for most crops were slightly higher than for 1934, but profit was largely offset by lower production per acre.

The live stock industry showed very definite signs of recovery. Numbers and values of all important species in the state increased during 1935. The aggregate farm value of the state's livestock increased 46% during the year. In the last three years the aggregate inventory value increased 92%, a minor part of which was due to increased numbers. The value of production of meat animals and wool was 43% more than the corresponding value for 1934. In general, California beef producers in 1935 had the most profitable season in the last five years and marketings were very large.

#### New Legislation

A large number of bills affecting financing, development and operation of irrigation and water districts were introduced at the 1935 session of the Legislature. These consisted principally of amendments to existing acts under which the districts were organized. A compilation of six of the more important acts together with general provisions of

1  
2  
3  
4  
5  
6  
7  
8  
9  
10  
11  
12  
13  
14  
15  
16  
17  
18  
19  
20  
21  
22  
23  
24  
25  
26  
27  
28  
29  
30  
31  
32  
33  
34  
35  
36  
37  
38  
39  
40  
41  
42  
43  
44  
45  
46  
47  
48  
49  
50  
51  
52  
53  
54  
55  
56  
57  
58  
59  
60  
61  
62  
63  
64  
65  
66  
67  
68  
69  
70  
71  
72  
73  
74  
75  
76  
77  
78  
79  
80  
81  
82  
83  
84  
85  
86  
87  
88  
89  
90  
91  
92  
93  
94  
95  
96  
97  
98  
99  
100

the constitution and statutes was assembled by the Division of Water Resources and published by the Supervisor of Documents as Bulletin No. 18-B, California Irrigation District Laws, 1935 Revision.

### Irrigation Districts Association

Two regular meetings of the Irrigation Districts Association were held during the year. The Spring session met in Sacramento, March 7 and 8, while the Fall gathering convened at San Diego, October 25 and 26, 1935.

The meeting in Sacramento was largely devoted to a consideration of the various legislative bills affecting irrigation districts. Each measure was taken up separately for discussion and was either approved, disapproved, or appropriate amendments suggested.

Amendments to the constitution and bylaws of the Association were passed to permit county water districts to become members of the Association and to form their own sections within that organization. Representatives of twelve county water districts, who were in attendance at the meeting, thereupon formed such a section and elected their own officers. There are thirty or more of these organizations now operating in the state.

At the San Diego meeting considerable emphasis was placed on the progress of refinancing programs that were being carried out by many of the districts through loans from the Reconstruction Finance Corporation. The restoration of defaulting districts to a sound financial basis was considered the most important problem before the Association.

Mr. Clifton H. Scott, president of the Drainage, Levee and Irrigation Division of the Reconstruction Finance Corporation, delivered an interesting address at the meeting, detailing accomplishments that had thus far been made and outlining future benefits that would accrue to the districts.

11  
12  
13  
14  
15  
16  
17  
18  
19  
20  
21  
22  
23  
24  
25  
26  
27  
28  
29  
30  
31  
32  
33  
34  
35  
36  
37  
38  
39  
40  
41  
42  
43  
44  
45  
46  
47  
48  
49  
50  
51  
52  
53  
54  
55  
56  
57  
58  
59  
60  
61  
62  
63  
64  
65  
66  
67  
68  
69  
70  
71  
72  
73  
74  
75  
76  
77  
78  
79  
80  
81  
82  
83  
84  
85  
86  
87  
88  
89  
90  
91  
92  
93  
94  
95  
96  
97  
98  
99  
100



## CHAPTER II

### FINANCIAL REVIEW

#### Refinancing Progress

At the close of the year 1935 there were forty-five irrigation districts listed in default which was one less than the number given for the preceding year. Six districts completed refinancing programs in this period while five others failed to meet their obligations when due. Many of the districts listed were only in technical default, however, pending completion of refunding plans that had already been approved and substantially carried out. Loans had been authorized by the Reconstruction Finance Corporation to twenty-nine of the districts in default. In eleven of these districts funds were being disbursed to bondholders in accordance with the terms of the plans approved. In ten other districts a large percentage of the old securities had been deposited in acceptance of the refinancing plans, but the required percentage for disbursement of funds had not been reached. Sixteen districts had filed petitions in bankruptcy in the Federal courts to compel acceptance by dissenting bondholders of refinancing plans which had been approved by a two-thirds majority of the bondholders affected.

Such was the status of refinancing plans at the close of 1935, but early in the following year the program was given a temporary setback by a five to four decision of the Supreme Court declaring Section 80 of the Federal Municipal Bankruptcy Act unconstitutional. Procedure in those districts which were refinancing under the act was brought to a standstill until such time as new legislation could be enacted, as there was no means of compelling dissenting bondholders to accept adopted terms.

Handwritten markings or characters, possibly a signature or initials, located at the top left edge of the page.

Handwritten markings or characters, possibly a signature or initials, located in the middle left edge of the page.

## Districts Securities Commission

The continued activity of districts in working out their refinancing programs was evidenced by the large number of petitions presented to the California Districts Securities Commission for action during the year 1935.

Plans for refunding outstanding indebtedness through loans from the Reconstruction Finance Corporation were examined and approved for Beaumont, Byron Bethany, El Dorado, Jacinto, Merced, Newport Heights, Paradise, Santa Fe, Thermalito and Tracy Clover. In addition to these, authorization was given to East Contra Costa and Scott Valley to exchange refunding bonds for old securities at par.

Orders validating refunding bonds for certification by the State Controller were issued to the following districts during the year:

<u>District</u>	<u>Outstanding Debt</u>	<u>Refunding Bonds</u>
East Contra Costa	\$1,153,000	\$1,153,000
El Dorado	712,438	360,500
Merced	16,701,018	8,600,000
Newport Heights	160,000	101,000
Palmdale	445,000	222,500
Santa Fe	748,642	394,500
San Dieguito	382,427	202,500
Vista	1,700,000	937,500

Approval was also given to certification of original bond issues in those cases where loans were required from P.W.A. for construction of works.

<u>District</u>	<u>Purpose of Issue</u>	<u>Amounts of Bonds</u>
Modesto	Canals, Power line	\$177,000
South Fork	Construction of Dam	133,000
West Stanislaus	Concrete lining canals	121,000

11  
12  
13  
14  
15

16  
17  
18  
19  
20  
21  
22  
23  
24  
25

At the end of the year there were nineteen districts operating under control and direction of the Districts Securities Commission in the matter of levying assessments and making expenditure of funds. This procedure is made possible by Section 11 of the Districts Securities Commission Act, on application of districts that are more than 20% in default in payment of debt.

Following is a list of districts that levied assessments for 1935-36 under the provisions of Section 11, and the dates on which these districts first notified the Commission of their intention to operate under its supervision.

<u>District</u>	<u>Date</u>
Banta Carbona - - -	July 30, 1934
Big Springs - - -	September 8, 1933
Byron-Bethany - - -	November 13, 1935
Carmichael - - -	August 14, 1933
Citrus Heights - - -	August 9, 1933
Corcoran - - -	August 9, 1933
Fairoaks - - -	August 7, 1934
Grenada - - -	August 24, 1935
Lindsay-Strathmore - - -	July 7, 1933
Merced - - -	August 22, 1933
Montague - - -	September 12, 1933
Naglee-Burk - - -	August 3, 1934
Oakdale - - -	July 18, 1934
Oroville-Wyandotte - - -	August 7, 1933
San Dieguito - - -	August 15, 1933
Thermalito - - -	August 24, 1933
Tracy Clover - - -	August 10, 1933
Waterford - - -	May 13, 1933
West Side - - -	August 2, 1933

Four districts formerly operating under the Section completed their refunding plans during this period. Alpaugh, Jacinto, Santa Fe, Lamesa, Lemon Grove, and Spring Valley through removal of default were released from direction by the Commission, while two new districts, Byron Bethany and Granada, came under its control.

11  
12  
13  
14  
15

16  
17  
18  
19  
20  
21  
22  
23  
24  
25

## District Finances

A general survey of irrigation district financial matters as of January 1, 1936, indicated that the total amount of bond principal and interest in default was \$12,685,101. Outstanding registered warrants as of that date were \$1,293,631. Revenues collected by the districts from assessments, water tolls and all other sources during the year gave a total of \$10,418,552, while cash expenditures made by these organizations during that same period amounted to \$10,758,738.

1  
2  
3  
4  
5  
6  
7  
8  
9  
10  
11  
12  
13  
14  
15  
16  
17  
18  
19  
20  
21  
22  
23  
24  
25  
26  
27  
28  
29  
30  
31  
32  
33  
34  
35  
36  
37  
38  
39  
40  
41  
42  
43  
44  
45  
46  
47  
48  
49  
50  
51  
52  
53  
54  
55  
56  
57  
58  
59  
60  
61  
62  
63  
64  
65  
66  
67  
68  
69  
70  
71  
72  
73  
74  
75  
76  
77  
78  
79  
80  
81  
82  
83  
84  
85  
86  
87  
88  
89  
90  
91  
92  
93  
94  
95  
96  
97  
98  
99  
100



## CHAPTER III

### DISTRICT ORGANIZATIONS

#### Irrigation Districts

During the year 1935 there were no irrigation districts formed in California and none were dissolved. Of the 96 districts listed as maintaining some form of organization eight may be classed as inactive since the purpose for which they were formed had not been carried out. In those districts no irrigation works had been constructed or acquired and water was not being furnished to the land through district operations. Reports from 87 active districts were received giving information on operations for the year 1935 and the data which they contain will be found in tabular form on subsequent pages of this bulletin.

#### Water Storage Districts

One new water storage district was organized in 1935 bringing the number of active districts to three. Since passage of the California Water Storage District Act in 1921, six districts of this type have been formed, but three were later dissolved. The organization differs from that under the Irrigation District Act principally in the method of voting and assessment, and in having its procedure entirely before the State Engineer instead of partly before the County Board of Supervisors. Voting is on a property qualification basis with one vote for each \$100 of assessed land value. Assessments are based on benefits derived.

#### Present Active Districts

1. Buena Vista Water Storage District, organized July 28, 1924.
2. Tulare Lake Basin Water Storage District, organized Dec. 6, 1927.
3. North Kern Water Storage District, organized Oct. 8, 1935.

2  
3  
4  
5  
6  
7  
8  
9  
10  
11  
12  
13  
14  
15  
16  
17  
18  
19  
20  
21  
22  
23  
24  
25  
26  
27  
28  
29  
30  
31  
32  
33  
34  
35  
36  
37  
38  
39  
40  
41  
42  
43  
44  
45  
46  
47  
48  
49  
50

51  
52  
53  
54  
55  
56  
57  
58  
59  
60  
61  
62  
63  
64  
65  
66  
67  
68  
69  
70  
71  
72  
73  
74  
75  
76  
77  
78  
79  
80  
81  
82  
83  
84  
85  
86  
87  
88  
89  
90  
91  
92  
93  
94  
95  
96  
97  
98  
99  
100

## NORTH KERN WATER STORAGE DISTRICT

Location: Southern San Joaquin Valley, extending for about 18 miles along the main highway between McFarland and Bakersfield, in Kern County.

Date of Organization election: October 8, 1935.

Gross Area: 58,673 acres.

Post Office: Bakersfield.

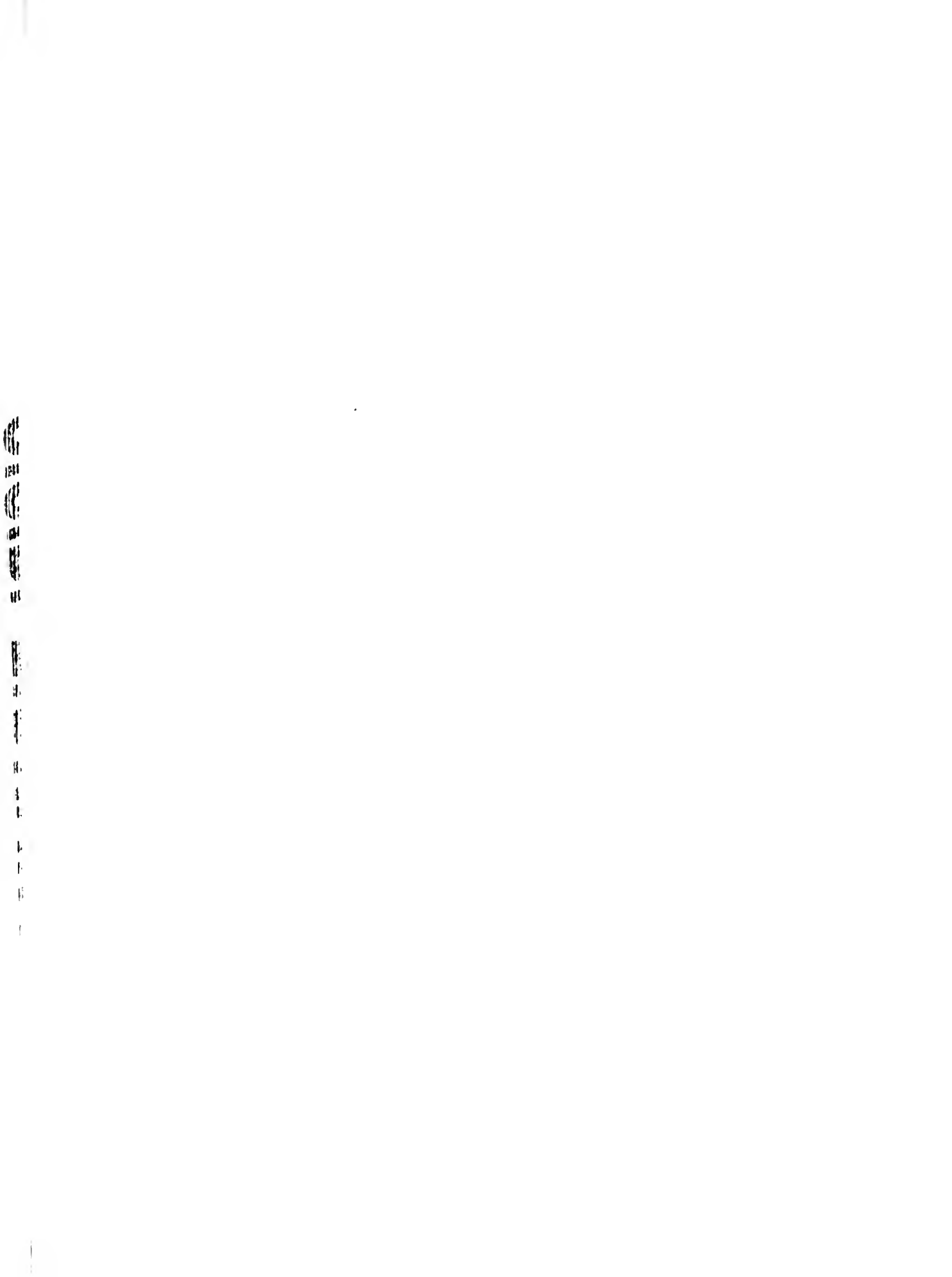
Railroad Transportation: Santa Fe and Southern Pacific.

### History:

The first irrigation in this area occurred about 1860 when several small private ditches diverting from Kern River were constructed to irrigate grain. Larger canals were built as settlement extended. Increased diversions soon caused controversies between upper and lower users and this led to extended litigation. The upper users representing mainly appropriative rights were led by Haggin and Carr, predecessors of the present Kern County Land Company, and lower claimants were represented by the predecessors of Miller and Lux Incorporated. This suit resulted in the famous decision of Lux versus Haggin in which riparian rights in California were defined. An agreement made between opposing interests in 1888 continues to be the basis under which the flow of Kern River is divided. This contract, known as the Miller-Haggin agreement, includes practically all of the water rights on that portion of Kern River within the San Joaquin Valley.

### Formation of Districts

In 1919 an attempt was made to organize an irrigation district in the Kern River area but the effort failed. At the request of local interests a detailed investigation was then made under direction of the



State Engineer. The report that was published in 1920 indicated water resources were available to serve about 292,000 acres. Based largely on the information in this report, two water storage districts were organized. The Kern River Water Storage District, formed in 1923, took in 248,000 acres both north and south of the river that were served by the upper canals. Buena Vista Water Storage District containing 78,000 acres was organized in 1928. It included Buena Vista Lake and the Miller and Lux land receiving Kern River water from the so-called "second point of measurement." Bonds were issued for construction of works and this district has continued in operation to date.

Plans of the Kern River Water Storage District contemplated purchase of canal rights and construction of a dam on Kern River. The various interests affected failed, however, to reach a satisfactory agreement and the district was dissolved.

Interest in the organization of new districts in the southern San Joaquin Valley was revived about 1935 by prospects of securing imported water from Central Valley Project. One of the first units to form was the new North Kern Water Storage District embracing a portion of the area formerly included in the old district on the north side of Kern River.

#### Present Development

A large portion of the land in the new district has been prepared for irrigation and has at times received water through the Calloway and Lerdo Canals. In most recent years the supply from Kern River has been insufficient for annual crops and has been inadequate to justify permanent plantings of such crops as require irrigation throughout the season. At present there are 4900 acres irrigated from wells. Alfalfa and grapes are the principal plantings while cotton predominates the annuals. Vegetables,

11  
12  
13  
14  
15

16  
17  
18  
19  
20  
21  
22  
23  
24  
25

deciduous and citrus fruits are produced in limited quantity. Ownership of the land is mostly in one large holding of 50,000 acres controlled by the Kern County Land Company.

### Soils and Topography

Soils of the district are classified as sands and sandy loams. Delano sandy loams and Madera sandy loams occur over the greater part of the area with lesser portions of the Hanford and Mojave series. The soil is of good depth and as indicated by growing crops is free from an injurious content of alkali. The surface of the land is comparatively smooth, of gentle slope and easily prepared for irrigation.

### Water Supply

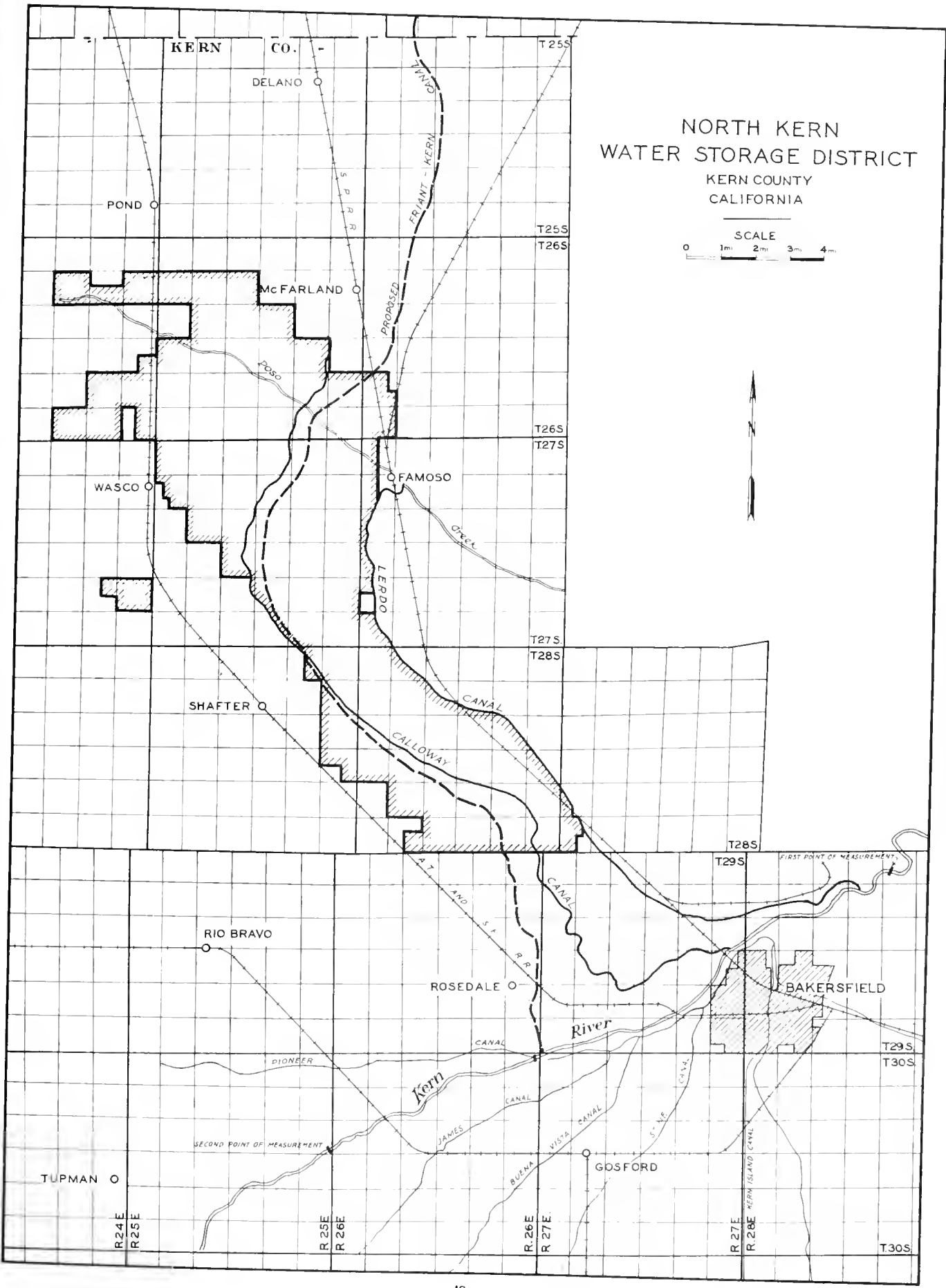
About 53,000 acres within the district boundaries are entitled to service from the Calloway and Lerdo canals when water is available from these sources. The discharge of Kern River is subject to such wide variations that without construction of storage a dependable supply is available for only a portion of the land. A tentative plan has been advanced by the district under which the rights of existing canals would be purchased and the supply increased by building a dam to store flood waters on the upper river. Under this proposal about 31,000 acres would be served directly from the canals and the remainder of the district by pumping from underground waters maintained by seepage and spreading from the canals. Preliminary studies indicate that a considerable quantity of water will need to be brought into the district for full development. Alternate plans that are being worked out may show that it would be more economical and desirable to secure this supply from the Friant-Kern Canal, of the Central Valley Project.

1  
2  
3  
4  
5  
6  
7  
8  
9  
10  
11  
12  
13  
14  
15  
16  
17  
18  
19  
20  
21  
22  
23  
24  
25  
26  
27  
28  
29  
30  
31  
32  
33  
34  
35  
36  
37  
38  
39  
40  
41  
42  
43  
44  
45  
46  
47  
48  
49  
50  
51  
52  
53  
54  
55  
56  
57  
58  
59  
60  
61  
62  
63  
64  
65  
66  
67  
68  
69  
70  
71  
72  
73  
74  
75  
76  
77  
78  
79  
80  
81  
82  
83  
84  
85  
86  
87  
88  
89  
90  
91  
92  
93  
94  
95  
96  
97  
98  
99  
100



# NORTH KERN WATER STORAGE DISTRICT

KERN COUNTY  
CALIFORNIA



11  
12  
13  
14  
15  
16  
17  
18  
19  
20  
21  
22  
23  
24  
25  
26  
27  
28  
29  
30  
31  
32  
33  
34  
35  
36  
37  
38  
39  
40  
41  
42  
43  
44  
45  
46  
47  
48  
49  
50  
51  
52  
53  
54  
55  
56  
57  
58  
59  
60  
61  
62  
63  
64  
65  
66  
67  
68  
69  
70  
71  
72  
73  
74  
75  
76  
77  
78  
79  
80  
81  
82  
83  
84  
85  
86  
87  
88  
89  
90  
91  
92  
93  
94  
95  
96  
97  
98  
99  
100

## CHAPTER IV

### STATISTICAL INFORMATION

The tables following this chapter contain a summary of information regarding operations of California Irrigation Districts for the year 1935, and the status of all outstanding bond issues as of January 1, 1936. A brief outline of the contents of these tables with comments and comparisons with previous years is contained in the following discussion.

#### Source of Supply, Storage and Distribution of Water.

Table I sets forth the sources of water supply, capacities of reservoirs, water storage available for the season of 1935, the amount of water diverted by gravity and by district pumps, and the distribution of this water. There were 22 major storage reservoirs in use with a combined capacity of 1,783,700 acre-feet. The stored water available amounted to 854,400 acre-feet or slightly less than half the total capacity of the reservoirs. Diversions reported were 6,503,752 acre-feet by gravity, 514,007 acre-feet pumped from streams and 324,784 acre-feet pumped from district wells. The total was 7,342,543 acre-feet, an increase of 1,722,258 acre-feet over that reported in 1934. The districts operated 310 irrigation wells and 261 drainage wells and for all pumping operations reported an installation of 37,097 horsepower. To supplement the water supply furnished by the districts, landowners were reported as operating 12,260 private irrigation wells, for which no information is available as to the quantity of water diverted, but the amount so used was considerably less than for the previous year due to the large increase in the quantity of water available for direct diversion from streams.

1  
2  
3  
4  
5  
6  
7  
8  
9  
10  
11  
12  
13  
14  
15  
16  
17  
18  
19  
20  
21  
22  
23  
24  
25  
26  
27  
28  
29  
30  
31  
32  
33  
34  
35  
36  
37  
38  
39  
40  
41  
42  
43  
44  
45  
46  
47  
48  
49  
50  
51  
52  
53  
54  
55  
56  
57  
58  
59  
60  
61  
62  
63  
64  
65  
66  
67  
68  
69  
70  
71  
72  
73  
74  
75  
76  
77  
78  
79  
80  
81  
82  
83  
84  
85  
86  
87  
88  
89  
90  
91  
92  
93  
94  
95  
96  
97  
98  
99  
100

## Irrigation District Crop Summary

Table II is a summary of the gross and irrigable areas of districts from which reports were obtained. It shows the irrigated and cropped acreage reported for 1935. The table also shows the number of individual holdings in each of the districts and the area held under tax deeds as of January 1, 1936. The 88 districts listed contain 3,262,320 acres of which 2,719,914 acres are considered irrigable. The total number of separate holdings is 93,697 of which it is estimated 56,394 are farm holdings with an estimated population of 229,800. The area held by districts under tax deed increased from 210,485 acres on January 1, 1935 to 327,937 acres on January 1, 1936. The percentage of the total area of all districts held under tax deed on January 1, 1936 was slightly in excess of 10%, whereas in the preceding year it had been only 6½%. The districts reporting gave a total of 1,975,095 acres cropped and of this area 1,804,803 acres were irrigated. Sixty-six per cent of the irrigable area was irrigated. This was an increase of 406,000 acres in the area irrigated as compared to that reported in 1934.

## Assessments, Water Tolls and Other Revenues

Table III indicates the source and amount of income for each active irrigation district. The total assessments due in these districts for the calendar year 1935, computed by taking half the sum of the levies for 1934-35 and 1935-36, gives a figure of \$5,108,384. This shows an increase of \$532,714 over the amount levied for the previous calendar year. This is a reversal of the tendency of the past several years which has been rather to lower assessments owing to the reduced income from farm operations. A comparison of the total assessments levied in the last six

123456789

1011121314151617181920

years, and the apparent average delinquencies at date of tax sales is given in the following tabulation:

<u>Years</u>	<u>Assessments</u>	<u>Average Delinquency</u>
1930-31	\$10,286,582	23%
1931-32	9,794,594	38%
1932-33	6,802,006	50%
1933-34	4,535,253	35%
1934-35	4,638,011	31%
1935-36	5,578,758	---

The total amount of tax-certificates sold to the districts in 1935 amounted to \$1,443,583. Collections from assessments, water tolls and other sources during this period was reported as \$10,418,552, as shown in the last two columns of the table.

#### Bonds and Warrants

Table IV presents as far as practicable the status of irrigation district bonds outstanding on January 1, 1936. Owing to the fact that thirty of the districts were still in various stages of refinancing on that date, it has not been possible to indicate their true position in all cases. Some districts shown to be heavily in default are not fairly represented since their obligations remain unpaid pending completion of refunding plans through loans already granted by the Reconstruction Finance Corporation.

The table gives the amount of bonds sold, refunded, paid and outstanding, as well as the amount of bond principal and interest in default. The last column shows the amount of interest bearing warrants reported out-

11  
12  
13  
14  
15  
16  
17  
18  
19  
20  
21  
22  
23  
24  
25  
26  
27  
28  
29  
30  
31  
32  
33  
34  
35  
36  
37  
38  
39  
40  
41  
42  
43  
44  
45  
46  
47  
48  
49  
50  
51  
52  
53  
54  
55  
56  
57  
58  
59  
60  
61  
62  
63  
64  
65  
66  
67  
68  
69  
70  
71  
72  
73  
74  
75  
76  
77  
78  
79  
80  
81  
82  
83  
84  
85  
86  
87  
88  
89  
90  
91  
92  
93  
94  
95  
96  
97  
98  
99  
100



standing on the first of the year. A new column has been added to show the amount of old bonds taken up and held by the Reconstruction Finance Corporation as security for loans advanced to several of the districts in the process of refinancing. The face values of old bonds are considered to be the outstanding obligations of these districts until such time as they have been actually cancelled and refunding bonds issued to replace them. Many of the districts have already voted refunding bonds and have had them approved for certification by the State Controller, but with few exceptions these refunding bonds have not been issued.

Following is a summary of bond information as represented by totals for all districts with outstanding issues on January 1, 1936.

Principal amount of bonds sold ----- \$103,533,221

Retired by payment -----	\$10,199,298	
Retired by discount in refunding	<u>1,991,743</u>	<u>12,191,041</u>
		\$ 91,342,180

Refunding issues used to retire warrants and other debts -----		<u>147,668</u>
---	--	----------------

Total amount outstanding---- \$ 91,489,848

Bonds outstanding (not due to date) -----	\$ 88,226,569
Bonds due and unpaid -----	<u>3,263,279</u>

Total outstanding ----- \$ 91,489,848

Number of districts with outstanding bonds -----	75
Number of districts in default-----	45

11  
12  
13  
14  
15  
16  
17  
18  
19  
20  
21  
22  
23  
24  
25  
26  
27  
28  
29  
30  
31  
32  
33  
34  
35  
36  
37  
38  
39  
40  
41  
42  
43  
44  
45  
46  
47  
48  
49  
50  
51  
52  
53  
54  
55  
56  
57  
58  
59  
60  
61  
62  
63  
64  
65  
66  
67  
68  
69  
70  
71  
72  
73  
74  
75  
76  
77  
78  
79  
80  
81  
82  
83  
84  
85  
86  
87  
88  
89  
90  
91  
92  
93  
94  
95  
96  
97  
98  
99  
100

Year Formed, Area and Outstanding Bonds per Acre

In Table V are listed ninety-four irrigation districts. Seventy-five of these districts had outstanding bonds at the end of the year. As previously stated the face values of old issues were considered to be the outstanding obligations unless refunding bonds had actually been issued to replace them prior to January 1, 1936. The amount of outstanding bonds per acre was obtained in each case by dividing the total obligation by the gross and irrigable areas shown. The resulting figures, as applied to acres in the districts, are a general average only and are not necessarily a measure of the bond principal and interest payments required from any particular acre or parcel of land. Bond payments per acre actually vary with the assessed valuations, which in most districts are not the same for all of the included lands. The total area included in the ninety-four districts is 3,412,167 acres. Of this total 868,000 acres are included in nineteen districts which have no bonded indebtedness.

1  
2  
3  
4  
5  
6  
7  
8  
9  
10  
11  
12  
13  
14  
15  
16  
17  
18  
19  
20  
21  
22  
23  
24  
25  
26  
27  
28  
29  
30  
31  
32  
33  
34  
35  
36  
37  
38  
39  
40  
41  
42  
43  
44  
45  
46  
47  
48  
49  
50  
51  
52  
53  
54  
55  
56  
57  
58  
59  
60  
61  
62  
63  
64  
65  
66  
67  
68  
69  
70  
71  
72  
73  
74  
75  
76  
77  
78  
79  
80  
81  
82  
83  
84  
85  
86  
87  
88  
89  
90  
91  
92  
93  
94  
95  
96  
97  
98  
99  
100

---

---

TABLES OF STATISTICAL DATA

---

---

1  
2  
3  
4  
5  
6  
7  
8  
9  
10  
11  
12  
13  
14  
15  
16  
17  
18  
19  
20  
21  
22  
23  
24  
25  
26  
27  
28  
29  
30  
31  
32  
33  
34  
35  
36  
37  
38  
39  
40  
41  
42  
43  
44  
45  
46  
47  
48  
49  
50  
51  
52  
53  
54  
55  
56  
57  
58  
59  
60  
61  
62  
63  
64  
65  
66  
67  
68  
69  
70  
71  
72  
73  
74  
75  
76  
77  
78  
79  
80  
81  
82  
83  
84  
85  
86  
87  
88  
89  
90  
91  
92  
93  
94  
95  
96  
97  
98  
99  
100

TABLE I  
DATA RELATING TO SOURCE OF SUPPLY, STORAGE AND DISTRIBUTION OF WATER FOR CALIFORNIA IRRIGATION DISTRICTS

Name of District	Source of Water Supply			Wells			District In- stalled Horse power	Reservoirs		Acre-feet reported diverted by Districts, 1935		Distribution of Water Diverted by Districts			Outside Districts Acre-feet
	Wells	District		Pri- vate	In- stalled Horse power	Capacity Acre-feet		Storage Available Season Acre-feet	By Pump	By Gravity	Total	Inside District		Total	
		Irrir- gation age	Drain- age									Total	Irrir- gation Acre-feet		
Albaugh	26		26	2,094	700				22,508	198,338	22,508	4,666	198,338	198,338	17,842
Alta															
Anderson-Cottonwood															
Banta-Carbora	6		6	1	4,350	113			34,912	10,447	10,447	19,383	19,383	19,383	3,828
Bard															
Baxter Creek															
Beacon	10		10		420	184			2,285	6,000	2,285	2,121	6,000	2,395	
Big Springs															
Brown Valley	5		5		125	35			2,000	18,626	18,626	18,328	298	18,626	
Buena Vista															
Byron-Redbank	3		3	1,450	60				10,835	5,000	10,835	10,835	5,000	10,835	
Camp Par West															
Campbell	2		2	450	170				2,872	1,470	2,872	1,657	60	2,932	
Carleton															
Carpenter	2		2	440	350				1,187	4,440	4,440	4,440	4,440	4,440	
Citrus Heights															
Compton-DeLavan															
Consolidated															
Corcoran	9		9	3,500	295	77			9,204	42,519	51,723	16,214	4,000	57,733	3,000
Cordova															
Deer Creek															
East Contra Costa	3		3	4	2,600	87			26,983	3,611	26,983	21,611	3,611	21,611	15
El Camino	30		30		880	65									
El Dorado															
El Mido	5		5	70	120	43			11,668	10,574	11,668	10,574	600	11,574	94
Empire West Side															
Fair Oaks															
Falbrook															
Fresno	7		7	2,400	210	40			5,000	409,629	414,629	408,629	261,160	408,629	1,000
Glenn-Colusa															
Grenada															
Hollister															
Hot Spring Valley															
Imperial															
Island No. 3															
Jacinto															
Jamez	54		54		300	7			10,600	500	11,100	11,000	11,000	11,000	100
La Canada	2		2	1	1,000	42			16,454	7,650	24,104	15,745	276	18,745	981
Laguna															
Lakeland															
Lakeside	1		1		40	140			60	5,289	5,289	4,784	25	5,255	35
La Mesa, L. D. & Spg. Val	4		4		525	240			3,113	2,338	5,451	3,786	1,400	3,786	208
Linden															
Lindsay-Strathmore	39		39	120	1,885	285			3,322	14,307	14,307	14,130	177	14,307	
Little Rock Creek															
Madera															
Maxwell															

11  
12  
13  
14  
15  
16  
17  
18  
19  
20  
21  
22  
23  
24  
25  
26  
27  
28  
29  
30  
31  
32  
33  
34  
35  
36  
37  
38  
39  
40  
41  
42  
43  
44  
45  
46  
47  
48  
49  
50  
51  
52  
53  
54  
55  
56  
57  
58  
59  
60  
61  
62  
63  
64  
65  
66  
67  
68  
69  
70  
71  
72  
73  
74  
75  
76  
77  
78  
79  
80  
81  
82  
83  
84  
85  
86  
87  
88  
89  
90  
91  
92  
93  
94  
95  
96  
97  
98  
99  
100



TABLE I  
DATA RELATING TO SOURCE OF SUPPLY, STORAGE AND DISTRIBUTION OF WATER FOR CALIFORNIA IRRIGATION DISTRICTS (Continued)

Name of District	Source of Water Supply		Wells			District	Reservoirs		Acre-foot Reported Diverted By Districts, 1925			Distribution of Water Diverted by Districts			
			Irrigation	Drainage	Total		Capacity Acre-feet	Storage Available for Season Acre-feet	By Pump	By Gravity	Total	Inside District		Outside District	
												Acres-foot	Acres-foot	Acres-foot	Acres-foot
Morcedo	Marconi River and Wells		80		80	270	289,000	289,000	61,679	416,454	478,133	416,454			
Modesto	Stokelum River and Wells		66		66	125	119,486	119,486	39,482	294,691	394,173	334,173			
Madame	Old River (San Joaquin River)						70,000	7,500	4,000	4,000	4,000	4,000			
Hagler-Bark	Yuba River						100,000		7,223	140,000	140,000	34,174	3,863	36,037	9,113
Nevada															
Newport Heights	Wells	3		3					1,000	1,000	1,000	988		988	12
Newport Mesa	Wells	1		1					338	338	338	318		318	20
Oakdale	Stanislaus River					2	56,250	56,250	163,043	163,043	163,043	162,343		162,343	700
Oranille-Wyndotte	Peather River						6,500	300	29,000	29,000	29,000	15,000		15,000	14,000
Palmdale	Little Rock Creek and Wells	1		1			9,000	2,000	100	5,010	5,110	5,010	100	5,110	23
Palo Verde	Colorado River									195,072	195,072	195,072		195,072	
Paradise	Little Butte Creek						3,475	3,125	4,757	4,757	4,757	4,757		4,757	
Patterson	Val River (Prop. L. & F. Company)								2,568	2,568	2,568	2,568		2,568	
Princeton-Codora- Glenn	Sacramento R. (and purchased from G. I. D.)									2,568	2,568	2,568		2,568	
President	Sacramento R. (and purchased from G. I. D.)														
Ramona	Wells	13		13					250	250	250	250		250	
Rialvale	Peather River								65,087	65,087	65,087	65,087		65,087	
Riverdale	Kings River					40				1,734	2,175	1,957	190	2,147	28
San Diegoito	Lake Hedges Reservoir (water purchased)						37,700		441	441	2,175	1,957	103	2,823	
Santa Fe	Lake Hedges Reservoir (water purchased)						37,700								
San Ysidro	Wells	5		5					384	384	384	384		384	
Scott Valley	Scott River									3,000	3,000	3,000		3,000	
Serrano	Santiago Creek and Wells						6,250			1,635	1,635	1,635		1,635	
South Montebello	Wells	3		3					825	825	825	825		825	
South San Joaquin	Stanislaus River						87,500	87,500		215,000	215,000	200,000		200,000	15,000
South Fork	South Fork Pit River									25,000	25,000	25,000		25,000	
Stinson	Kings River and Wells								18,380	18,380	18,380	11,000		11,000	300
Table Mountain	Peather River						4,510			4,000	4,000	4,000		4,000	
Terra Bella	Wells	33		33					4,874	4,874	4,874	4,718	156	4,874	
Thermalito	Peather River						3,680	3,680		4,887	4,887	4,887		4,887	
Tracy Clover	Old River (San Joaquin River)								1,350	1,350	1,350	1,350		1,350	
Tranquillity	San Joaquin River, Kings River and Wells									4,250	4,250	4,250		4,250	
Tulare	Kaweah River and Private Wells									499,910	616,128	616,128		616,128	
Turlock	Tuolumne River and Wells						228,000	228,000	116,218	499,910	616,128	616,128		616,128	
Vandalla	Tule River and Wells								1,628	1,628	1,628	1,580	48	1,628	
Vista	Lake Henshaw (water purchased)						205,000	21,440		7,299	7,299	6,098	369	6,467	32
Walnut	San Gabriel River and Wells								1,800	200	2,000	2,000		2,000	
Waterford	Tuolumne River								27,045	27,045	27,045	27,045		27,045	
West Side	San Joaquin River								12,786	12,786	12,786	8,987		8,987	36
West Stanislaus	San Joaquin River								45,093	45,093	45,093	44,502		44,502	591
Woodbridge	Mokelumne River									73,985	73,985	49,385		49,385	24,600
Totals		310	261	571	12,260	37,097	1,574,735	836,396	838,791	6,503,752	7,342,543	6,239,430	6,839	6,246,269	971,976
Buena Vista W.S.D.	Kern River				133		209,000	18,000		100,000	100,000	100,000		100,000	

1  
2  
3  
4  
5  
6  
7  
8  
9  
10  
11  
12  
13  
14  
15  
16  
17  
18  
19  
20  
21  
22  
23  
24  
25  
26  
27  
28  
29  
30  
31  
32  
33  
34  
35  
36  
37  
38  
39  
40  
41  
42  
43  
44  
45  
46  
47  
48  
49  
50  
51  
52  
53  
54  
55  
56  
57  
58  
59  
60  
61  
62  
63  
64  
65  
66  
67  
68  
69  
70  
71  
72  
73  
74  
75  
76  
77  
78  
79  
80  
81  
82  
83  
84  
85  
86  
87  
88  
89  
90  
91  
92  
93  
94  
95  
96  
97  
98  
99  
100

TABLE II  
CALIFORNIA IRRIGATION DISTRICT CROP REPORT FOR 1935

Name of District	Acres, Acre	Irrigable Acres, Acres	Area Held by Dist. under Tax Deed, Acres	Estimated Number of Holdings			Kind and Acreage of Crops Reported										Area Cropped			Total Acres Reported Cropped
				Farm Land	Town Lots	Total	Alfalfa	Cotton	Rice	Grain and/or Hay	Other Field and Trunk	Vines No. report furnished	Deciduous Fruits, Nuts and Olives	Citrus and Avocado	Pasture	Not Segregated	Dry Farmed Acres	Irrigated Acres		
																			Farm Land	
Albany	8,133	7,300	4,016	100	2,800	100	900	935	1,287	212	49,000	9,000	1,000	280	30	14	3,630	3,644		
Alta	129,300	110,000	3,400	6,260	2,900	360	100	935	1,287	212	49,000	9,000	1,000	280	30	14	3,630	3,644		
Anderson-Cottonwood	32,000	28,000	2,750	360	3,900	188	1,495	52	1,685	9,996	52	369	52	641	1,994	11,503	11,503	13,497		
Baeta-Carbena	15,500	14,000	191	150	3	188	1,495	52	1,685	9,996	52	369	52	641	1,994	11,503	11,503	13,497		
Bard	6,700	6,000	191	150	3	188	1,495	52	1,685	9,996	52	369	52	641	1,994	11,503	11,503	13,497		
Baxter Creek	8,926	7,500	91	91	500	91	500										500	500		
Beaumont	4,161	3,161	214	360	1,260	183	1,100										1,893	2,011		
Big Springs	3,567	2,500	160	93	160	133	1,100										1,893	2,011		
Brown Valley	44,000	11,740	358	18	152	139	200										3,600	3,600		
Butte Valley	22,146	17,500	15,893	75	45	120	200										1,300	1,300		
Byron-Ethany	17,200	12,000	None	186	55	241	5,000										2,000	2,000		
Camp Par West	4,095	2,658	None	8	8	130	130										1,723	2,004		
Carmichael	3,135	2,500	289	336	21	286	21										2,000	2,164		
Carpenter	1,128	1,200	None	138	152	266	21										1,192	1,192		
Citrus Heights	3,167	2,700	250	332	332	332	25										1,674	1,674		
Compton-Delevan	12,652	11,000	12,626	3	60	497	60										800	800		
Consolidated	148,971	130,000	None	4,600	216	4,816	6										85,576	85,576		
Corcoran	51,606	45,000	897	292	9	306	2,996										1,547	20,599		
Cordua	5,000	5,000	4,242	15	15	710	200										1,385	1,441		
Deer Creek	2,186	1,900	17	17	200	635	430										290	1,441		
East Contra Costa	20,200	17,000	638	400	120	520	681										800	1,357		
El Camino	7,546	6,500	3,600	200	200	400	400										26,576	26,576		
El Dorado	30,702	19,500	None	552	602	1,154	2,996										1,547	20,599		
El Nido	9,330	7,400	None	133	2	135	1,600										264	2,462		
Empire West Side	6,460	5,500	None	51	50	3,140	250										1,240	2,695		
Fair Oaks	4,268	3,700	171	292	157	449	29										76	2,287		
Fairbrook	9,917	8,500	None	302	74	376	376										1,200	1,533		
Fresno	241,300	210,000	1,343	9,255	602	1,154	400										165,000	165,000		
Glenn-Colusa	122,383	110,000	52,908	950	937	16,773	22,000										31,400	31,600		
Grenada	2,200	1,800	864	29	170	1,166	1,166										600	1,700		
Hollister	24,463	21,000	None	610	943	1,553	770										4,720	18,700		
Hot Springs Valley	9,533	9,000	2,588	37	37	37	37										700,504	700,504		
Imperial	612,200	521,000	37,000	4,786	6,168	10,954	195,027										3,000	3,000		
Island No. 3	4,620	4,000	None	150	150	150	150										3,000	3,000		
Jacinto	11,732	10,500	4,360	170	170	1,166	1,166										3,771	8,032		
Janes	24,395	18,266	24,259	9	9	2,332	2,332										11,620	11,620		
La Canada	1,322	1,100	179	551	551	551	551										11,620	11,620		
La Junta	34,858	30,000	None	800	800	800	800										27,000	27,000		
Lakeland	23,233	21,000	1,516	24	24	24	24										5,239	5,239		
Lakeside	320	288	None	90	90	90	90										5,239	5,239		
La Mesa, La. G. and S. V.	19,662	13,000	600	6,800	5,700	6,800	201										551	4,251		
Linden	13,700	12,000	None	192	24	168	168										5,409	13,775		
Lindsay-Strathmore	15,234	14,000	5,257	363	363	363	363										8,381	13,775		
Little Rock Creek	3,073	2,600	None	137	6	143	30										8,381	13,775		
Madera	173,000	160,000	None	2,000	2,132	4,132	4,132										8,381	8,381		

\* Included in this total are 861 acres reported double cropped.  
\*\* Of this total 296,804 acres reported double cropped.

1  
2  
3  
4  
5  
6  
7  
8  
9  
10  
11  
12  
13  
14  
15  
16  
17  
18  
19  
20  
21  
22  
23  
24  
25  
26  
27  
28  
29  
30  
31  
32  
33  
34  
35  
36  
37  
38  
39  
40  
41  
42  
43  
44  
45  
46  
47  
48  
49  
50  
51  
52  
53  
54  
55  
56  
57  
58  
59  
60  
61  
62  
63  
64  
65  
66  
67  
68  
69  
70  
71  
72  
73  
74  
75  
76  
77  
78  
79  
80  
81  
82  
83  
84  
85  
86  
87  
88  
89  
90  
91  
92  
93  
94  
95  
96  
97  
98  
99  
100



1  
2  
3  
4  
5  
6  
7  
8  
9  
10  
11  
12  
13  
14  
15  
16  
17  
18  
19  
20  
21  
22  
23  
24  
25  
26  
27  
28  
29  
30  
31  
32  
33  
34  
35  
36  
37  
38  
39  
40  
41  
42  
43  
44  
45  
46  
47  
48  
49  
50  
51  
52  
53  
54  
55  
56  
57  
58  
59  
60  
61  
62  
63  
64  
65  
66  
67  
68  
69  
70  
71  
72  
73  
74  
75  
76  
77  
78  
79  
80  
81  
82  
83  
84  
85  
86  
87  
88  
89  
90  
91  
92  
93  
94  
95  
96  
97  
98  
99  
100

TABLE III  
SUMMARY OF ASSESSMENTS LEVIED, TAX CERTIFICATES SOLD AND REVENUES RECEIVED FROM ASSESSMENTS, WATER TOLLS AND OTHER SOURCES

	Assessed Valuation per Acre				Assessment, 1934-1935				Assessment, 1935-1936				Collections in 1935	
	High	Low	Usual or Average	Total Assessed Valuation	Rate per \$100 of Valuation	Total Assessment Levied	Tax Certificates Sold, Including Penalties	Total Assessed Valuation	Bond Fund	General Fund	Total Rate	Total Assessment Levied	From Assessments and Water Tolls	From All Other Sources
	\$	\$	\$	\$	\$	\$	\$	\$	\$	\$	\$	\$	\$	\$
Alpauah	60	40	50	424,676	3.00	6,020	1,826	424,676	0.45	0.84	2.50	5,472	87,754	2,678
Alta	100	65	65	8,441,593	1.35	114,156	15,017	8,401,621	Report furnished		1.29	106,024	112,147	2,243
Anderson-Cottonwood	150	25	45	2,146,686	2.30	49,374	10,970	2,141,587			2.30	49,257	119,053	561
Banta-Carbena	---	---	100	585,712	0.20	1,171	503	585,700			0.20	1,171	1,130	---
Beaumont	---	---	88	380,370	9.50	36,135	13,456	378,140			3.48	11,184	58,025	1,612
Big Springs	---	---	100	246,087	0.75	1,846	1,019	236,760			0.73	1,828	9,748	48
Browns Valley	---	---	---	384,000	---	---	---	387,200			---	---	4,625	191
Butte Valley	40	40	40	118,390	3.13	3,706	2,716	756,700			1.25 per A.	---	3,066	2,751
Byram-Bethany	200	---	95	1,677,963	2.32	38,028	5,640	1,679,957		3.00	3.00	50,396	66,072	800
Camp Far West	150	5	85	349,625	3.60	12,600	---	349,625	3.07	9.86	4.17	14,597	14,645	---
Carmichael	100	80	80	249,682	9.66	24,659	9,644	240,661			4.88	23,784	27,619	315
Carpenter	900	400	800	14,983	1.55	1,493	1,450	964,911	1.70	6.00	6.00	16,404	30,305	943
Citrus Heights	---	---	100	301,547	6.00	18,092	4,808	17,289,446			127.28	64,066	23,569	1,116
Compton-Bellevan	---	---	75	740,340	29.58	219,012	236,555	50,335			---	---	3,617	13,812
Consolidated	110	10	100	9,251,083	1.00	93,243	8,907	9,271,115		1.00	1.00	92,711	110,598	2,243
Corcoran	100	80	100	5,075,840	1.50	75,322	15,848	5,075,840	0.41	1.00	1.50	75,319	131,436	9,495
Cordova	28	8	25	126,738	1.40	1,774	1,567	52,559		3.62	4.52	2,376	4,701	12,744
Deer Creek	100	1	100	177,052	2.05	3,630	1,773	177,052	1.96	---	1.96	3,470	5,666	80
East Contra Costa	190	50	175	3,526,722	2.65	93,373	7,465	3,483,885	2.33	0.32	2.65	92,279	164,319	2,728
El Camino	---	---	75	395,768	2 per A.	11,554	---	371,000			---	---	19,528	5,908
El Dorado	155	2	47	1,956,966	0.80	15,656	1,282	1,949,834	0.40	0.40	0.80	15,599	24,514	1,514
El Mido	100	20	75	539,150	2.40	12,940	2,996	538,910	1.56	1.04	2.60	14,012	17,996	97
Empire West Side	---	---	100	646,041	0.50	3,230	819	646,041		0.50	0.50	3,230	3,044	---
Fairoaks	90	2	83	345,825	2.00	7,306	8,199	343,816			2.60	8,239	39,448	961
Fallbrook	---	---	100	989,831	0.80	7,919	2,395	990,477		0.70	0.70	6,233	6,658	41
Fresno	---	---	74	17,701,315	0.90	159,307	18,594	17,808,330		1.00	1.00	178,383	201,732	6,532
Glenn-Colusa	44	25	40	4,043,732	5.50	224,012	149,061	2,829,498			20.00	565,900	231,462	37,858
Grenada	---	---	163	400,000	4.14	16,560	860	188,980			1.14	2,154	9,207	2,773
Hollister	---	---	91	2,750,240	---	---	0	2,750,240		0.20	0.20	5,500	4,679	---
Hot Springs Valley	30	5	20	179,407	3.00	5,172	---	---		No report furnished	---	---	---	---
Imperial	150	100	125	47,886,221	1.90	909,838	201,403	47,335,493			2.40	1,136,050	1,969,189	116,899
Island No. 3	---	---	48	205,000	---	---	---	224,070			0.25	560	201	---
Jacinto	---	---	60	637,743	1.80	12,989	5,891	438,950	1.60	0.90	2.50	12,498	14,038	1,839
James	150	25	150	3,619,928	2.84	102,743	108,759	3,563,420	2.42	0.43	2.85	101,522	32,620	14,632
La Canada	---	---	100	1,305,205	1.60	20,833	5,476	1,100,656			1.60	17,670	37,453	1,853
La Grana	---	---	45	1,076,854	0.90	10,000	---	1,292,265			1.25	16,153	27,758	696
Lakeland	---	---	---	328,000	---	---	---	328,000			---	---	6,139	---
Lakeside	---	---	---	135,952	3.50	4,657	1,723	135,952			2.50	3,326	6,409	67
La Mesa, L. T. and S. V.	350	180	---	5,813,025	1.90	112,415	73,600	5,733,467	1.51	0.39	1.90	108,566	222,651	24,765
Linden	100	65	75	1,693,871	4.60	7,917	---	1,164,100	0.73	---	0.73	8,498	8,927	860
Lindsay-Strathmore	175	---	165	220,901	4.50	9,897	6,105	220,901	2.50	2.00	4.50	81,505	250,223	18,241
Little Rock Creek	---	---	100	9,052,595	0.10	9,045	2,048	9,023,505			---	---	9,977	---
Madera	125	5	40-60	821,955	1.70	206,690	37,853	12,078,870			3.00	362,366	1,007,562	29,464
Maxwell	---	---	100	821,955	---	---	0	821,955	47.54	1.76	48.30	434,803	250	---
Merced	120	5	75	12,158,405	1.70	206,690	37,853	12,078,870			---	---	---	---

1  
2  
3  
4  
5  
6  
7  
8  
9  
10  
11  
12  
13  
14  
15  
16  
17  
18  
19  
20  
21  
22  
23  
24  
25  
26  
27  
28  
29  
30  
31  
32  
33  
34  
35  
36  
37  
38  
39  
40  
41  
42  
43  
44  
45  
46  
47  
48  
49  
50  
51  
52  
53  
54  
55  
56  
57  
58  
59  
60  
61  
62  
63  
64  
65  
66  
67  
68  
69  
70  
71  
72  
73  
74  
75  
76  
77  
78  
79  
80  
81  
82  
83  
84  
85  
86  
87  
88  
89  
90  
91  
92  
93  
94  
95  
96  
97  
98  
99  
100



TABLE III

SUMMARY OF ASSESSMENTS LEVIED, TAX CERTIFICATES SOLD AND REVENUES RECEIVED FROM ASSESSMENTS, WATER TOLLS AND OTHER SOURCES (Continued)

Name of District	Assessed Valuation per Acre				Assessment, 1934-1935				Assessment, 1935-1936				Collections in 1935	
	High	Low	Usual or Average	Total Assessed Valuation	Rate per \$100 of Valuation	Total Assessed	Total Assessed Levied	Tax Certificates Sold, Including Penalties	Bond Fund	General Fund	Total Rate	Total Assessed Levied	From Assessments and Water Tolls	From All Other Sources
	\$	\$	\$	\$	\$	\$	\$	\$	\$	\$	\$	\$	\$	\$
Modesto	150	10	79-80	7,402,580	3.00	222,077	7,398,670	19,159	2.00	0.76	2.76	204,177	805,734	6,975
Montague	75	1	40	427,636	0.33	1,426	345,692	71,925	0.33	0.33	0.33	1,123	1,297	511
Megalee-Burk	100	60	100	239,402	5.50	13,167	206,763	1,464	5.50	5.50	5.50	11,372	12,132	1,111
Rejada	45	6	15	3,597,400	1.00	35,974	4,438	4,438	1.00	1.00	1.00	36,024	160,376	307,933
Newport Heights	1000	---	600	1,157,600	1.25	14,470	1,145,930	2,467	0.47	0.53	1.00	11,459	25,574	219
Newport Mesa	---	---	600	422,330	1.85	7,813	422,115	3,609	1.02	1.02	1.85	7,810	7,674	51
Oakdale	135	1	60	3,751,150	3.80	142,543	3,574,840	23,147	0.83	2.00	3.80	135,844	164,688	64,638
Oreville-Wyandotte	100	10	100	2,163,847	1.00	21,638	1,795,677	3,648	1.00	1.00	1.00	17,957	62,326	8,617
Palmdale	---	---	100	139,973	5.00	6,998	1,42,320	3,142	3.67	1.33	5.00	7,116	9,437	2,417
Palo Verde	100	---	50	2,416,800	2.50	60,393	2,989,155	6,013	---	1.90	1.90	56,794	174,346	72,503
Paradise	60	2	60	399,430	3.75	14,991	387,611	5,105	0.50	3.25	3.75	14,533	24,416	3,190
Potter Valley	60	60	60	257,196	4.95	12,731	256,891	186	3.55	1.95	5.50	14,126	15,947	280
Princeton-Codora-Glenn	70	65	67	864,690	3.70	31,566	859,364	3,454	1.20	2.50	3.70	30,629	53,565	13,220
Provident	80	77	100	1,611,495	5.70	91,855	1,611,495	57,669	5.00	---	5.00	80,575	27,776	25,565
Ramona	200	50	109	82,320	1.00	6,586	81,910	1,853	---	---	8.00	6,583	9,796	886
Riverdale	30	20	30	505,220	---	---	505,220	---	---	---	0.00	---	47,375	4,687
Riverdale	---	---	50	732,482	0.60	4,395	732,482	484	1.00	0.60	1.00	13,179	21,739	604
San Diego	200	150	515	2,000,080	3.00	60,708	2,060,894	28,780	1.18	1.38	2.00	41,218	73,295	11,630
Santa Fe	900	---	185	1,849,680	4.20	77,687	1,850,800	58,460	0.82	3.38	4.20	77,734	119,543	2,979
San Ysidro	250	20	211	1,117,515	1.50	1,763	1,117,715	778	1.50	---	1.50	1,766	9,715	141
Scott Valley	---	---	50	256,565	2.00	5,131	256,565	0	---	---	---	---	6,479	---
Serrano	1000	10	1000	1,318,630	1.00	13,185	1,317,865	484	1.00	---	1.00	13,179	21,739	604
South Fork	---	---	41	502,680	---	---	502,680	0	1.18	0.32	1.50	7,540	3,770	106
South Montebello	---	---	950	702,331	2.00	14,047	702,798	1,404	1.80	1.80	1.80	12,650	21,071	2,656
South San Joaquin	135	20	100	6,580,145	5.00	329,007	6,561,175	36,727	3.23	1.77	5.00	328,059	334,521	69,978
Stinson	---	---	50	2,365	10.00	236	30,703	2,597	3.00	11.00	14.00	4,298	11,870	31,213
Stratford	---	---	100	---	---	---	---	---	---	---	---	---	---	---
Table Mountain	---	---	125	240,675	---	---	---	20,393	4.80	0.50	5.30	1,952	1,952	5,022
Terra Bella	130	30	100	450,132	8.00	36,011	379,056	11,025	4.20	2.80	7.00	26,534	104,216	12,447
Thermalito	---	---	150	449,040	2.00	8,980	450,382	3,278	---	---	2.50	11,260	18,674	5,535
Tracy-Clover	100	100	100	87,931	6.50	5,782	87,332	2,432	---	7.00	7.00	6,112	6,498	246
Tranquillity	150	150	150	991,049	---	---	---	0	---	---	0.00	---	15,286	---
Tulare	60	20	40	---	---	---	---	1,214	---	0.70	0.70	10,389	16,472	8,311
Turlock	125	20	80	13,338,330	3.00	40,150	13,373,810	54,048	2.76	2.76	2.76	369,133	414,544	901,619
Vandalia	200	200	200	241,614	6.25	15,101	241,614	806	8.11	2.99	11.00	26,578	30,711	8,377
Vista	300	100	125	2,205,742	5.50	103,063	2,202,733	35,988	2.00	3.50	5.50	121,152	244,854	17,176
Wainut	1000	1000	1000	906,160	0.50	4,531	907,120	426	---	---	0.50	4,536	9,232	29
Waterford	300	5	80	1,010,923	4.00	40,437	967,201	8,696	4.00	4.00	4.00	38,688	42,139	1,700
West Side	150	1	100	1,857,715	1.75	17,783	1,834,134	3,804	---	1.50	1.50	15,510	50,706	1,932
West Stanislaus	---	---	200	2,182,582	2.00	43,647	2,182,665	4,013	2.31	0.44	2.75	60,022	148,795	387
Woodbridge	150	20	85	1,217,908	2.00	24,095	1,221,314	3,081	2.00	---	2.00	24,321	50,740	3,141
T. Tals	---	---	---	\$216,166,110	---	\$4,636,011	\$214,522,116	\$1,443,583	---	---	---	\$5,578,758	\$6,505,617	\$1,212,935

1  
2  
3  
4  
5  
6  
7  
8  
9  
10  
11  
12  
13  
14  
15  
16  
17  
18  
19  
20  
21  
22  
23  
24  
25  
26  
27  
28  
29  
30  
31  
32  
33  
34  
35  
36  
37  
38  
39  
40  
41  
42  
43  
44  
45  
46  
47  
48  
49  
50  
51  
52  
53  
54  
55  
56  
57  
58  
59  
60  
61  
62  
63  
64  
65  
66  
67  
68  
69  
70  
71  
72  
73  
74  
75  
76  
77  
78  
79  
80  
81  
82  
83  
84  
85  
86  
87  
88  
89  
90  
91  
92  
93  
94  
95  
96  
97  
98  
99  
100

TABLE IV

SUMMARY OF STATISTICAL DATA RELATING TO OUTSTANDING BONDS AND WARRANTS OF CALIFORNIA IRRIGATION DISTRICTS  
 JANUARY 1, 1936  
 (Totals for each district underscored)

Name of District	Number of Bond Issue	Date of Bonds	Range of Maturities	Reg-ular Coupon Rate per cent	Face Value of Bonds Voted		Principal Amount Sold	Status of Bond Issues January 1, 1936				Bond Payments Due and Not Paid		Interest Bearing Warrants Outstanding 1/1/36	
					Original	Refunding		Refunded	Retired by Dis-count in Refunding	Retired by Payment	Said by R.F.C. for Refunding	Out-standing	Principal		Interest
Alpough	1	Jul. 1, 1916	Jul. 1, 1927-1946	6	\$ 293,000	\$-----	\$ 283,000	-----	-----	\$ 75,290	\$145,940	\$ 207,710	\$-----	\$-----	54
Alta	1 Ref.	Feb. 4, 1902	Jan. 1, 1923-1942	5	-----	500,000	492,000	-----	-----	396,000	-----	96,000	-----	-----	None
Anderson-Cottonwood	-----	-----	-----	-----	-----	-----	1,255,000	-----	-----	127,000	-----	1,128,000	73,000	-----	-----
	1	Jan. 1, 1916	Jan. 1, 1937-1956	6	1,255,000	-----	487,000	-----	-----	-----	-----	-----	-----	-----	-----
	2	Jul. 1, 1917	Jul. 1, 1938-1957	6	575,000	-----	-----	-----	-----	-----	-----	-----	-----	-----	-----
	3	Jul. 1, 1920	Jul. 1, 1925-1934	6	200,000	-----	-----	-----	-----	-----	-----	-----	-----	-----	-----
Santa-Carbo	-----	-----	-----	-----	-----	-----	1,137,060	-----	-----	-----	-----	1,137,060	-----	230,763	56,396
	1	Aug. 1, 1924	Jul. 1, 1940-1964	6	1,164,000	-----	-----	-----	-----	-----	-----	-----	-----	-----	-----
	2	Dec. 1, 1925	Jul. 1, 1941-1965	6	705,000	-----	-----	-----	-----	-----	-----	-----	-----	-----	-----
	3	Jan. 1, 1927	Jan. 1, 1948-1967	6	125,000	-----	-----	-----	-----	-----	-----	-----	-----	-----	-----
Baxter Creek	-----	-----	-----	-----	-----	-----	511,000	-----	-----	-----	-----	511,000	-----	199,012	51,760
	1	Jul. 1, 1921	Jan. 1, 1926-1943	6	511,000	-----	-----	-----	-----	-----	-----	-----	-----	-----	-----
Beaumont	-----	-----	-----	-----	-----	-----	300,000	-----	-----	94,900	198,100	205,100	-----	-----	-----
	1	Nov. 1, 1920	Jan. 1, 1926-1944	6	300,000	-----	-----	-----	-----	-----	-----	-----	-----	-----	-----
	2	Jul. 1, 1926	Jul. 1, 1931-1950	6	239,000	-----	-----	-----	-----	-----	-----	-----	-----	-----	-----
Big Springs	-----	-----	-----	-----	-----	-----	67,000	-----	-----	9,000	-----	58,000	-----	8,460	-----
	1	Jul. 1, 1928	Jan. 1, 1930-1946	6	69,000	-----	-----	-----	-----	-----	-----	-----	-----	-----	-----
Butte Valley	-----	-----	-----	-----	-----	-----	594,000	-----	-----	-----	-----	594,000	-----	317,760	-----
	1	Sep. 1, 1923	Jan. 1, 1944-1963	6	594,000	-----	-----	-----	-----	-----	-----	-----	-----	-----	-----
Byrons-Bethany	-----	-----	-----	-----	-----	-----	650,000	-----	-----	81,000	-----	569,000	-----	8,672	1,200
	1	Nov. 1, 1920	Jan. 1, 1924-1952	6	650,000	-----	-----	-----	-----	-----	-----	-----	-----	-----	-----
	2	Jul. 1, 1923	Jul. 1, 1933-1955	6	559,000	-----	-----	-----	-----	-----	-----	-----	-----	-----	-----
	1 Ref.	Jan. 1, 1934	Sinking Fund-1972	6	100,000	569,000	-----	-----	-----	-----	-----	-----	-----	-----	-----
Camp Far West	-----	-----	-----	-----	-----	-----	179,000	-----	-----	-----	-----	179,000	-----	-----	-----
	1	Jul. 1, 1927	Jul. 1, 1937-1956	6	200,000	-----	-----	-----	-----	-----	-----	-----	-----	-----	-----
Carmichael	-----	-----	-----	-----	-----	-----	120,000	-----	-----	38,900	-----	81,100	-----	12,993	-----
	1	Jul. 1, 1916	Jul. 1, 1923-1942	6	120,000	-----	-----	-----	-----	-----	-----	-----	-----	-----	-----
	2	Jan. 1, 1926	Jan. 1, 1933-1945	6	97,000	-----	-----	-----	-----	-----	-----	-----	-----	-----	-----
Carpenter	-----	-----	-----	-----	-----	-----	200,000	-----	-----	8,000	-----	192,000	-----	-----	-----
	1	Jul. 1, 1929	Jul. 1, 1934-1953	6	200,000	-----	-----	-----	-----	-----	-----	-----	-----	-----	-----
Citrus Heights	-----	-----	-----	-----	-----	-----	215,000	-----	-----	63,000	-----	152,000	-----	21,360	-----
	1	Aug. 1, 1921	Jul. 1, 1926-1945	6	262,000	-----	-----	-----	-----	-----	-----	-----	-----	-----	-----
Compton-Delevan	-----	-----	-----	-----	-----	-----	575,000	-----	-----	139,000	-----	384,000	-----	90,690	-----
	1	Dec. 1, 1921	Jan. 1, 1922-1936	6	575,000	-----	-----	-----	-----	-----	-----	-----	-----	-----	-----
	1 Ref.	Jan. 1, 1927	Jan. 1, 1937-1950	6	-----	384,000	-----	-----	-----	-----	-----	-----	-----	-----	-----
Corcoran	-----	-----	-----	-----	-----	-----	760,000	-----	-----	27,000	-----	733,000	-----	107,790	2,609
	1	Jan. 1, 1920	Jan. 1, 1931-1955	6	760,000	-----	-----	-----	-----	-----	-----	-----	-----	-----	-----
Cordova	-----	-----	-----	-----	-----	-----	267,000	-----	-----	1,182	-----	103,725	-----	750	-----
	1	Jun. 1, 1920	Jul. 1, 1925-1940	6	267,000	289,725	-----	-----	-----	-----	-----	-----	-----	-----	-----
	2	Jun. 1, 1921	Jul. 1, 1925-1940	6	192,000	-----	-----	-----	-----	-----	-----	-----	-----	-----	-----
	1 Ref.	Jun. 1, 1925	Jul. 1, 1941-1951	6	75,000	-----	-----	-----	-----	-----	-----	-----	-----	-----	-----
	R.F.C.	Sep. 1, 1934	Jul. 1, 1938-1959	4	-----	187,000	-----	-----	-----	-----	-----	-----	-----	-----	-----
Deer Creek	-----	-----	-----	-----	-----	-----	25,000	-----	-----	17,500	-----	7,500	-----	-----	-----
	1	Sep. 1, 1927	Jul. 1, 1929-1938	6	25,000	-----	-----	-----	-----	-----	-----	-----	-----	-----	-----
East Contra Costa	-----	-----	-----	-----	-----	-----	1,324,000	-----	-----	148,000	-----	1,153,000	-----	-----	-----
	1	Jan. 1, 1924	Jan. 1, 1935-1954	6	1,324,000	-----	-----	-----	-----	-----	-----	-----	-----	-----	-----
Brentwood	-----	-----	-----	-----	-----	-----	514,000	-----	-----	-----	-----	-----	-----	-----	-----
	1	Jan. 1, 1921	Jul. 1, 1927-1946	6	514,000	-----	-----	-----	-----	-----	-----	-----	-----	-----	-----
Kaightsen	-----	-----	-----	-----	-----	-----	650,000	-----	-----	-----	-----	-----	-----	-----	-----
	1	Mar. 1, 1922	Jan. 1, 1928-1947	6	650,000	-----	-----	-----	-----	-----	-----	-----	-----	-----	-----
Lone Tree	-----	-----	-----	-----	-----	-----	160,000	-----	-----	-----	-----	-----	-----	-----	-----
	1 Ref.	Jan. 1, 1934	Sinking Fund-1978	6	-----	1,153,000	-----	-----	-----	-----	-----	-----	-----	-----	-----

\* Approximately \$253,318 of Cordua bonds were purchased and retired with loan of \$105,725 from R.F.C.

Vertical text or markings along the left edge of the page, possibly a page number or binding artifact.

TABLE IV  
SUMMARY OF STATISTICAL DATA RELATING TO OUTSTANDING BONDS AND WARRANTS OF CALIFORNIA IRRIGATION DISTRICTS (Continued)  
JANUARY 1, 1936  
(Totals for each district underscored)

Name of District	Number of Bond Issues	Date of Bonds	Range of Maturities	Red- ucing Coupon Rate, per cent	Face Value of Bonds Voted		Principal Amount Sold	Disposition of Bonds Sold				Bond Payments due and Not Paid		Interest Bearing Warrants Outstanding 1/1/36	
					Original	Refunding		Refunded	Retired by Dis- count in Refunding	Retired by Payment	Held by R.F.C. for Refunding	Out- standing	Principal		Interest
El Camino	1st Div. 2nd Div. 3rd Div.	Nov. 1, 1926	Jan. 1, 1937-1956	6	430,000	275,000	423,000	None	None	None	None	None	None	None	None
El Dorado	1	Mar. 1, 1927	Jan. 1, 1948-1967	6	1,300,000	688,000	688,000	None	None	None	640,000	688,000	None	42,439	24,439
El Nido	1	Jan. 1, 1931	Jan. 1, 1934-1951	6	135,000	120,000	120,000	None	None	None	None	120,000	None	None	None
Fair Oaks	1	Oct. 1, 1918	Jul. 1, 1924-1943	6	200,000	160,000	160,000	None	None	None	None	84,000	16,000	5,720	None
Glenn-Colusa	1	Oct. 1, 1920	Jan. 1, 1922-1941	6	2,587,000	300,000	2,404,150	285,000	1,155,696	1,197,354	1,197,354	1,248,454	195,354	115,326	18,726
Glenn-Colusa	1 Ref.	Nov. 1, 1924	Jan. 1, 1925-1941	6	300,000	300,000	2,404,150	285,000	1,155,696	1,197,354	1,197,354	1,248,454	195,354	115,326	18,726
Grenada	1	Jul. 1, 1921	Jul. 1, 1926-1940	6	240,000	136,000	240,000	240,000	None	104,000	None	136,000	None	4,080	None
Grenada	1 Ref.	Jun. 16, 1931	Jul. 1, 1938-1970	6	240,000	136,000	240,000	240,000	None	104,000	None	136,000	None	4,080	None
Hot Spring Valley	1	May 1, 1920	Jan. 1, 1923-1936	6	160,000	100,000	160,000	160,000	None	None	77,000	83,000	None	None	None
Hot Spring Valley	2	Oct. 15, 1921	Jan. 1, 1927-1939	6	60,000	60,000	160,000	160,000	None	None	77,000	83,000	None	None	None
Imperial	1	Dec. 1, 1920	Jan. 1, 1923-1942	6	16,000,000	14,250,000	16,000,000	16,000,000	None	None	1,749,000	15,251,000	1,700	294,930	878,266
Imperial	2	Jan. 1, 1915	Jan. 1, 1936-1955	5	3,500,000	3,500,000	16,000,000	16,000,000	None	None	82,713	155,287	None	None	None
Imperial	3	Jul. 1, 1917	Jul. 1, 1938-1957	5	2,500,000	2,500,000	16,000,000	16,000,000	None	None	5,000	955,000	445,000	441,990	60
Imperial	4	Oct. 1, 1919	Jul. 1, 1925-1934	5 1/2	2,500,000	2,500,000	16,000,000	16,000,000	None	None	None	328,000	None	None	None
Imperial	1 Ref.	Feb. 1, 1933	Jul. 1, 1935-1956	6	7,500,000	7,500,000	16,000,000	16,000,000	None	None	None	328,000	None	None	None
Imperial	2nd Div.	Jul. 1, 1939-1942	Sinking Fund-1983	6	6,000,000	7,500,000	16,000,000	16,000,000	None	None	None	155,287	None	None	None
Imperial	3rd Div.	Jul. 1, 1939-1942	Sinking Fund-1983	6	7,500,000	7,500,000	16,000,000	16,000,000	None	None	None	155,287	None	None	None
Jacinto	1	Dec. 1, 1920	Jan. 1, 1923-1942	6	238,000	238,000	238,000	238,000	None	None	82,713	155,287	None	None	None
James	1	May 15, 1920	Jan. 1, 1928-1947	6	1,000,000	1,000,000	1,000,000	1,000,000	None	None	5,000	955,000	445,000	441,990	60
La Canada	1	Jul. 1, 1925	Jul. 1, 1936-1960	5	328,000	328,000	328,000	328,000	None	None	None	328,000	None	None	None
La Canada	2	Jul. 1, 1928	Jul. 1, 1948-1968	5	174,000	174,000	328,000	328,000	None	None	None	328,000	None	None	None
Lakeside	1	Feb. 1, 1925	June 1, 1946-1965	6	35,000	35,000	35,000	35,000	None	None	3,500	31,500	None	None	None
Lakeside	2	Jul. 1, 1914	Jun. 30, 1935-1939	6	4,222,500	2,467,000	2,467,000	2,467,000	None	822,400	10,000	1,747,768	None	1,050	None
Lakeside	3	Jan. 1, 1925	Jan. 1, 1946-1965	6	1,235,000	66,000	2,000,000	2,000,000	None	None	None	401,000	None	None	None
Lakeside	4	May 1, 1937	May 1, 1937-1964	4	490,000	401,000	2,000,000	2,000,000	None	None	None	401,000	None	None	None
Lakeside	5	May 1, 1934	May 1, 1940-1972	4	1,347,768	1,347,768	2,000,000	2,000,000	None	None	None	1,346,768	None	None	None
Lakeside	6	Jul. 1, 1916	Jul. 1, 1927-1946	6	1,650,000	1,650,000	1,650,000	1,650,000	None	None	223,000	1,427,000	167,000	234,225	None
Lakeside	2	Oct. 1, 1918	Oct. 1, 1929-1948	6	1,408,000	1,250,000	1,650,000	1,650,000	None	None	None	1,427,000	167,000	234,225	None
Lakeside	3	Jul. 1, 1914	Jan. 1, 1934-1954	5	368,000	60,000	368,000	368,000	None	None	8,000	360,000	23,480	92,480	None
Lakeside	4	Jan. 16, 1920	Jan. 1, 1941-1960	6	200,000	200,000	368,000	368,000	None	None	None	360,000	23,480	92,480	None
Lakeside	5	May 1, 1921	Jan. 1, 1925-1942	6	48,000	48,000	368,000	368,000	None	None	None	360,000	23,480	92,480	None
Lakeside	6	Jan. 1, 1925	Jan. 1, 1941-1960	6	60,000	60,000	368,000	368,000	None	None	None	360,000	23,480	92,480	None

\* Grenada exchanged \$130,000 refunding issue for \$240,000 of original bonds.

\*\* La Mesa, L. C. and S. V. retired bonds and coupons in the amount of \$2,242,114 through loan of \$1,346,768 from R.F.C.

1  
2  
3  
4  
5  
6  
7  
8  
9  
10  
11  
12  
13  
14  
15  
16  
17  
18  
19  
20  
21  
22  
23  
24  
25  
26  
27  
28  
29  
30  
31  
32  
33  
34  
35  
36  
37  
38  
39  
40  
41  
42  
43  
44  
45  
46  
47  
48  
49  
50  
51  
52  
53  
54  
55  
56  
57  
58  
59  
60  
61  
62  
63  
64  
65  
66  
67  
68  
69  
70  
71  
72  
73  
74  
75  
76  
77  
78  
79  
80  
81  
82  
83  
84  
85  
86  
87  
88  
89  
90  
91  
92  
93  
94  
95  
96  
97  
98  
99  
100

TABLE IV  
SUMMARY OF STATISTICAL DATA RELATING TO OUTSTANDING BONDS AND WARRANTS OF CALIFORNIA IRRIGATION DISTRICTS (Continued)  
JANUARY 1, 1936  
(Totals for each district underscored)

Name of District	Number of Bond Issues	Date of Bonds	Range of Maturities	Ref-ear Coupon Rate per cent	Face Value of Bonds Voted		Principal Amount Sold	Status of Bond Issues January 1, 1936				Out-standing 1/1/36		
					Original	Refunding		Refunded	Retired by Dis-count in Refunding	Retired by R.F.C. for Refunding	Out-standing		Bond Payment Due and not Paid	
													Principal	Interest
Maxwell	1	Sep. 15, 1918	Jan. 1, 1922-1941	6	\$ 260,000	-----	\$ 260,000	\$ None	\$ 26,000	\$ None	\$ 234,000	\$ 114,600	\$ 44,190	
Merced	1 1st Div. 2 2nd Div. 1 3rd Div. 1 4th Div.	Jan. 1, 1922 Jan. 1, 1922 Jan. 1, 1922 May 1, 1924 Apr. 1, 1926	Jan. 1, 1933-1950 Jan. 1, 1951-1953 Jan. 1, 1954-1955 Jan. 1, 1956-1962 Jan. 1, 1937-1964 Jan. 1, 1965-1966	6 6 5 1/2 6	16,250,000 3,420,000 1,800,000 1,420,000 5,600,000 3,250,000 1,000,000	----- ----- ----- ----- ----- ----- -----	----- ----- ----- ----- ----- ----- -----	----- ----- ----- ----- ----- ----- -----	----- ----- ----- ----- ----- ----- -----	----- ----- ----- ----- ----- ----- -----	----- ----- ----- ----- ----- ----- -----	----- ----- ----- ----- ----- ----- -----	----- ----- ----- ----- ----- ----- -----	----- ----- ----- ----- ----- ----- -----
Modesto	1 Ref. 2 Ref. 3 4 5-6 7-11 12 13 14 14 Sp.	May 1, 1902 Jan. 1, 1903 Jan. 5, 1904 Jul. 1, 1909 Jan. 1, 1911 Jan. 1, 1914 Jul. 1, 1920 Oct. 1, 1923 Jan. 1, 1924 Jan. 1, 1927 Dec. 1, 1934	Jan. 1, 1923-1942 Jan. 1, 1914-1923 Jan. 1, 1925-1944 Jul. 1, 1930-1939 Jul. 1, 1932-1941 Jul. 1, 1935-1954 Jul. 1, 1931-1950 Jul. 1, 1934-1953 Jul. 1, 1944-1951 Jan. 1, 1942-1951 Aug. 1, 1940-1952	5 5 5 5 5 5 5 5 5 4	3,326,000 ----- 18,000 200,000 50,000 610,000 2,000,000 135,000 500,000 236,000 177,000	----- ----- ----- ----- ----- ----- ----- ----- ----- ----- -----	----- ----- ----- ----- ----- ----- ----- ----- ----- ----- -----	----- ----- ----- ----- ----- ----- ----- ----- ----- ----- -----	----- ----- ----- ----- ----- ----- ----- ----- ----- ----- -----	----- ----- ----- ----- ----- ----- ----- ----- ----- ----- -----	----- ----- ----- ----- ----- ----- ----- ----- ----- ----- -----	----- ----- ----- ----- ----- ----- ----- ----- ----- ----- -----	----- ----- ----- ----- ----- ----- ----- ----- ----- ----- -----	----- ----- ----- ----- ----- ----- ----- ----- ----- ----- -----
Montague	1	Jan. 1, 1926	Jan. 1, 1947-1966	6	1,395,000	-----	1,395,000	None	None	None	1,395,000	500,000	None	
Maglee-Burk	1 1 Ref.	Oct. 1, 1921 Jul. 1, 1927	Jul. 1, 1926-1940 Jul. 1, 1933-1967	6 6	209,000 ----- 192,000	----- ----- -----	195,000 ----- -----	None ----- -----	9,000 ----- -----	None ----- -----	186,000 ----- -----	33,750 ----- -----	7,260 ----- -----	
Nevada	Original 1 1st Div. 2 2nd Div. 2 Refunding	Jul. 1, 1925 Jul. 1, 1926 Jul. 1, 1928 Sep. 15, 1931	Jul. 1, 1936-1965 Jul. 1, 1933-1965 Jul. 1, 1949-1962 Sinking Fund-1961	5 1/2 5 1/2 5 1/2 4	9,842,000 6,000,000 1,250,000 2,592,000 ----- 8,100,000	----- ----- ----- ----- ----- -----	----- ----- ----- ----- ----- -----	----- ----- ----- ----- ----- -----	----- ----- ----- ----- ----- -----	----- ----- ----- ----- ----- -----	----- ----- ----- ----- ----- -----	----- ----- ----- ----- ----- -----	----- ----- ----- ----- ----- -----	----- ----- ----- ----- ----- -----
Newport Heights	1	Jan. 1, 1920	Jan. 1, 1941-1960	6	160,000	-----	160,000	None	None	None	160,000	1,368	None	
Newport Mesa	1	Jan. 1, 1919	Jul. 1, 1940-1959	6	50,000	-----	50,000	None	None	None	50,000	3,060	None	
Oakdale	----- 1 2 3 4 5 1 Ref.	----- Jul. 1, 1910 Jan. 1, 1913 Jul. 1, 1915 Jan. 1, 1924 Jan. 21, 1925 Oct. 1, 1931	----- Jul. 1, 1931-1940 Jan. 1, 1934-1943 Jul. 1, 1936-1955 Jan. 1, 1925-1931 Jan. 1, 1927-1965	----- 5 5 6 5 1/2 5 -----	3,675,000 1,609,000 400,000 400,000 175,000 1,100,000 ----- 2,320,000	----- ----- ----- ----- ----- ----- ----- -----	----- ----- ----- ----- ----- ----- ----- -----	----- ----- ----- ----- ----- ----- ----- -----	----- ----- ----- ----- ----- ----- ----- -----	----- ----- ----- ----- ----- ----- ----- -----	----- ----- ----- ----- ----- ----- ----- -----	----- ----- ----- ----- ----- ----- ----- -----	----- ----- ----- ----- ----- ----- ----- -----	----- ----- ----- ----- ----- ----- ----- -----
Oroville-Wyandotte	1	Jan. 1, 1923	Jan. 1, 1944-1963	6	2,000,000	-----	1,695,000	None	None	None	1,065,000	262,800	None	
Owens Valley	1	Jan. 1, 1924	Jan. 1, 1940-1959	5 1/2	1,650,000	-----	471,500	None	None	None	471,500	No information	None	

•• Maxwell bonds all acquired and held by pool of certain landowners.  
• Modesto has \$31,000 outstanding matured bonds that have never been presented for payment.





TABLE IV  
SUMMARY OF STATISTICAL DATA RELATING TO OUTSTANDING BONDS AND WARRANTS OF CALIFORNIA IRRIGATION DISTRICTS (Continued)  
JANUARY 1, 1936  
(Totals for each district underscored)

Name of District	Number of Bond Issues	Date of Bonds	Range of Maturities	Reg-ular Coupon Rate, Per cent	Face Value of Bonds Voted		Principal Amount Sold	Status of Bond Issues January 1, 1936			Out-standing	Bond Payments Due and not Paid		Interest Warrants Outstanding 1/1/36
					Original	Refunding		Refunded	Retired by Dis-count in Refunding	Held by R.F.C. for Refunding		Principal	Interest	
Palmdale	1 2 3 1 Ref.	May 16, 1920 May 1, 1921 Jan. 1, 1925 Jul. 1, 1934	Jan. 1, 1941-1960 Jan. 1, 1933-1942 Jan. 1, 1941-1960 Jan. 1, 1947-1982	6 6 6 6	\$ 545,000 382,000 63,000 100,000	\$----- ----- 222,500 -----	\$ 445,000	\$445,000	None	None	\$ 222,500	None	None	\$ 6,778
Palo Verde	1	Feb. 1, 1916	Feb. 1, 1922-1935	6	500,000	-----	490,000	None	None	None	476,000	None	None	None
Mutual Water Company	1	May 1, 1918	May 1, 1919-1958	6 1/2	1,285,951	-----	490,000	None	None	None	476,000	None	None	None
Levee District	2	Nov. 1, 1922	Nov. 1, 1923-1962	6 1/2	371,379	-----	97,000	None	None	None	82,000	None	None	None
Levee District	1	Dec. 1, 1921	Dec. 1, 1923-1962	6	850,000	-----	175,000	None	None	None	156,500	None	None	3,000
Drainage District	1	Dec. 1, 1921	Dec. 1, 1933-1942	6	850,000	-----	175,000	None	None	None	156,500	None	None	3,000
Irrigation District	1	Sept. 1, 1925	Jul. 1, 1937-1955	6	3,500,000	-----	1,190,000	None	None	None	957,000	None	262,238	None
Paradise	1	May 1, 1917	May 1, 1938-1957	6	490,000	-----	490,000	None	None	None	476,000	None	None	None
	2	Jul. 1, 1920	Jul. 1, 1925-1956	6	350,000	-----	490,000	None	None	None	476,000	None	None	None
Potter Valley	1	Jul. 1, 1928	Jul. 1, 1933-1952	5 1/2	100,000	-----	97,000	None	None	None	82,000	None	None	None
Princeton-Codora-Glenn	1	Jul. 1, 1918	Jul. 1, 1939-1958	6	175,000	-----	175,000	None	None	None	156,500	None	None	3,000
Provident	1	Aug. 15, 1918	Aug. 15, 1930-1949	6	1,000,000	-----	1,190,000	None	None	None	957,000	None	262,238	None
	2	Aug. 9, 1921	Jul. 1, 1922-1933	6	1,000,000	-----	1,190,000	None	None	None	957,000	None	262,238	None
Ramona	1	Jul. 1, 1926	Jul. 1, 1947-1966	6	91,000	-----	91,000	None	None	None	91,000	None	None	None
Richvale	1	----- 1931	1937-1970	6	515,000	-----	515,000	None	None	None	515,000	None	None	None
San Diegoito	1	Apr. 1, 1923	Jan. 1, 1931-1950	6	400,000	-----	400,000	None	None	None	361,000	None	None	21,427
Santa Fe	1	Nov. 1, 1923	Jul. 1, 1933-1952	6	700,000	-----	700,000	None	None	None	361,000	None	None	21,427
	2 Ref.	Jul. 1, 1935	Jul. 1, 1940-1972	4	-----	394,500	700,000	684,000	325,000	None	393,500	None	None	None
San Ysidro	1	Jan. 1, 1913	Jan. 1, 1934-1943	5	25,000	-----	25,000	None	None	None	20,500	None	None	None
Scott Valley	1	Jul. 1, 1920	Jul. 1, 1923-1937	6	125,000	-----	125,000	None	None	None	67,000	None	None	None
	1 Ref.	Jan. 1, 1932	Jan. 1, 1933-1947	6	69,000	-----	125,000	69,000	None	None	67,000	None	None	None
	2 Ref.	Jan. 1, 1936	Jan. 1, 1937-1961	5	67,000	-----	125,000	69,000	None	None	67,000	None	None	None
Serrano	1	Jul. 1, 1929	Jul. 1, 1934-1953	6	200,000	-----	200,000	None	None	None	192,000	None	None	None
South Fork	1	Jul. 1, 1934	Jul. 1, 1938-1964	4	165,000	-----	133,000	None	None	None	133,000	None	2,660	None
South Montebello	1	Jan. 30, 1923	Jan. 1, 1926-1945	6	125,000	-----	125,000	None	None	None	62,500	None	None	None
South San Joaquin	1	Jul. 1, 1910	Jul. 1, 1931-1940	5	5,985,000	4,791,250	5,985,000	4,510,550	None	None	5,806,250	None	610,607	None
	2	Apr. 18, 1913	Apr. 18, 1934-1942	5	1,875,000	-----	1,875,000	-----	-----	-----	-----	-----	-----	-----
	3	Jul. 1, 1913	Jul. 1, 1934-1943	5	790,000	-----	790,000	-----	-----	-----	-----	-----	-----	-----
	4	Sep. 1, 1919	Sep. 1, 1940-1959	5 1/2	500,000	-----	500,000	-----	-----	-----	-----	-----	-----	-----
	5	Nov. 6, 1923	Jul. 1, 1944-1963	5 1/2	550,000	-----	550,000	-----	-----	-----	-----	-----	-----	-----
	6	Nov. 21, 1925	Jan. 1, 1927-1965	5	1,100,000	-----	1,100,000	-----	-----	-----	-----	-----	-----	-----
	1st Div.	Oct. 1, 1931	Jul. 1, 1936-1981	5	-----	3,741,250	-----	-----	-----	-----	-----	-----	-----	-----
	2nd Div.	-----	Jul. 1, 1936-1981	5 1/2	-----	1,050,000	-----	-----	-----	-----	-----	-----	-----	-----
Stinson	1	Apr. 1, 1923	Jan. 1, 1931-1950	6	360,000	-----	360,000	None	None	None	360,000	None	64,162	31,902
Table Mountain	1	Jul. 1, 1923	Jul. 1, 1944-1963	6	187,000	-----	187,000	None	None	None	187,000	None	36,295	None
	2	Mar. 1, 1927	Jan. 1, 1948-1967	6	62,000	-----	187,000	None	None	None	187,000	None	36,295	None

\*\* Palmdale exchanged \$222,500 refunding bonds for \$445,000 original issue.  
\* Santa Fe retired \$684,000 old bonds and \$62,642 in warrants with loan of \$393,500 from R.F.C.



TABLE IV  
SUMMARY OF STATISTICAL DATA RELATING TO OUTSTANDING BONDS AND WARRANTS OF CALIFORNIA IRRIGATION DISTRICTS (Continued)  
JANUARY 1, 1936  
(Totals for each district underscored)

Name of District	Number of Bond Issues	Date of Bonds	Range of Maturities	Regular Coupon Rate, per cent	Face Value of Bonds Voted		Principal Amount Sold	Status of Bond Issue, January 1, 1936			Bond Payments Due and Not Paid		Interest Bearing Warrants outstanding 1/1/36		
					Original	Refunding		Refunded	Retired by Dis-count in Refunding	Retired by Payment	Held by R. F. C. Refunding	Out-standing		Principal	Interest
Terra Bella	1 1 Ref.	Nov. 1, 1916 Jul. 1, 1933	Nov. 1, 1927-1946 Sinking Fund-1979	6 4	\$1,000,000	499,000	\$1,000,000	\$ 729,500	\$ 364,750	\$ 206,500	None	\$ 428,750	\$ 19,500	\$ 13,930	None
Thermalito	1 2	Mar. 1, 1923 May 1, 1926	Jan. 1, 1934-1953 Jan. 1, 1947-1966	6 6	320,000 50,000	---	320,000	None	None	None	\$ 308,000	320,000	19,000	67,620	11,698
Tracy-Clover	1	May 1, 1923	Jan. 1, 1939-1963	6	52,170	---	52,170	None	None	None	None	52,170	None	9,540	2,242
Traquillity	1	Jan. 1, 1920	Jan. 1, 1924-1955	5 1/2	260,000	---	260,000	None	None	29,000	None	231,000	2,000	2,117	16,663
Tule	1	Jul. 1, 1921	Jan. 1, 1926-1943	6	806,000	---	806,000	None	None	None	None	806,000	363,000	342,310	None
Turlock	1 Ref. 2 3 4-5 6 7 8	Jul. 1, 1902 Jan. 1, 1905 Jul. 1, 1910 Jan. 1, 1911 Jul. 1, 1920 Jul. 1, 1920 Jan. 1, 1924 Jan. 1, 1924 Dec. 31, 1926	Jan. 1, 1922-1942 Jan. 1, 1926-1935 Jul. 1, 1931-1940 Jan. 1, 1932-1941 Jul. 1, 1936-1951 Jul. 1, 1941-1960 Jan. 1, 1927-1936 Jan. 1, 1932-1946	5 5 5 5 6 5 1/2 5 5	6,714,000 200,000 100,000 1,206,000 3,598,000 510,000 500,000 600,000	1,200,000	7,870,000	---	---	1,938,960	None	5,931,040	None	None	None
Vandavia	1 1 Ref.	Apr. 1, 1924 Jul. 1, 1933	Jan. 1, 1928-1947 Sinking Fund-1966	6 5	210,000	172,200	210,000	172,200	None	37,800	None	172,200	None	None	None
Vista	1	Jan. 1, 1925	Jan. 1, 1946-1965	6	1,700,000	---	1,700,000	None	None	None	1,640,000	1,700,000	None	840	None
Waterford	1 2	Oct. 1, 1916 Jul. 1, 1919	Oct. 1, 1927-1946 Jul. 1, 1927-1946	6 5 1/2	670,000 295,000	---	670,000	None	None	38,075	None	631,925	118,075	136,231	None
West Side	1 2 3 4	Jan. 1, 1917 Jul. 1, 1918 Jan. 1, 1920 Feb. 1, 1929	Jan. 1, 1938-1957 Jul. 1, 1939-1958 Jan. 1, 1930-1939 Jan. 1, 1950-1969	6 6 6 6	595,000 285,000 100,000 50,000	---	558,500	None	None	48,000	None	510,500	57,000	91,965	6,500
West Stanislaus	1 1 Ref.	Jul. 1, 1927 Jul. 1, 1933	Jul. 1, 1932-1957 Jul. 1, 1936-1963	6 5 1/2	1,216,376	1,160,000	1,175,000	1,139,000	None	15,000	None	1,160,000	None	23,890	6,500
Williams	1	Jul. 1, 1921	Jan. 1, 1923-1937	6	732,000 600,000	---	632,000	332,000	---	70,000	None	562,000	51,000	257,070	41,597
Totals	---	---	---	---	39,881,454	---	103,533,221	36,401,530	1,991,743	10,199,268	77,746,511	61,489,848	3,263,279	9,421,822	1,203,631
Puena Vista W.S.D.	1	Jul. 1, 1929	Jul. 1, 1935-1968	6	942,731	---	942,731	None	None	9,731	None	933,000	None	None	75,191

• Terra Bella exchanged \$364,750 of refunding issue for \$729,500 of old bonds.

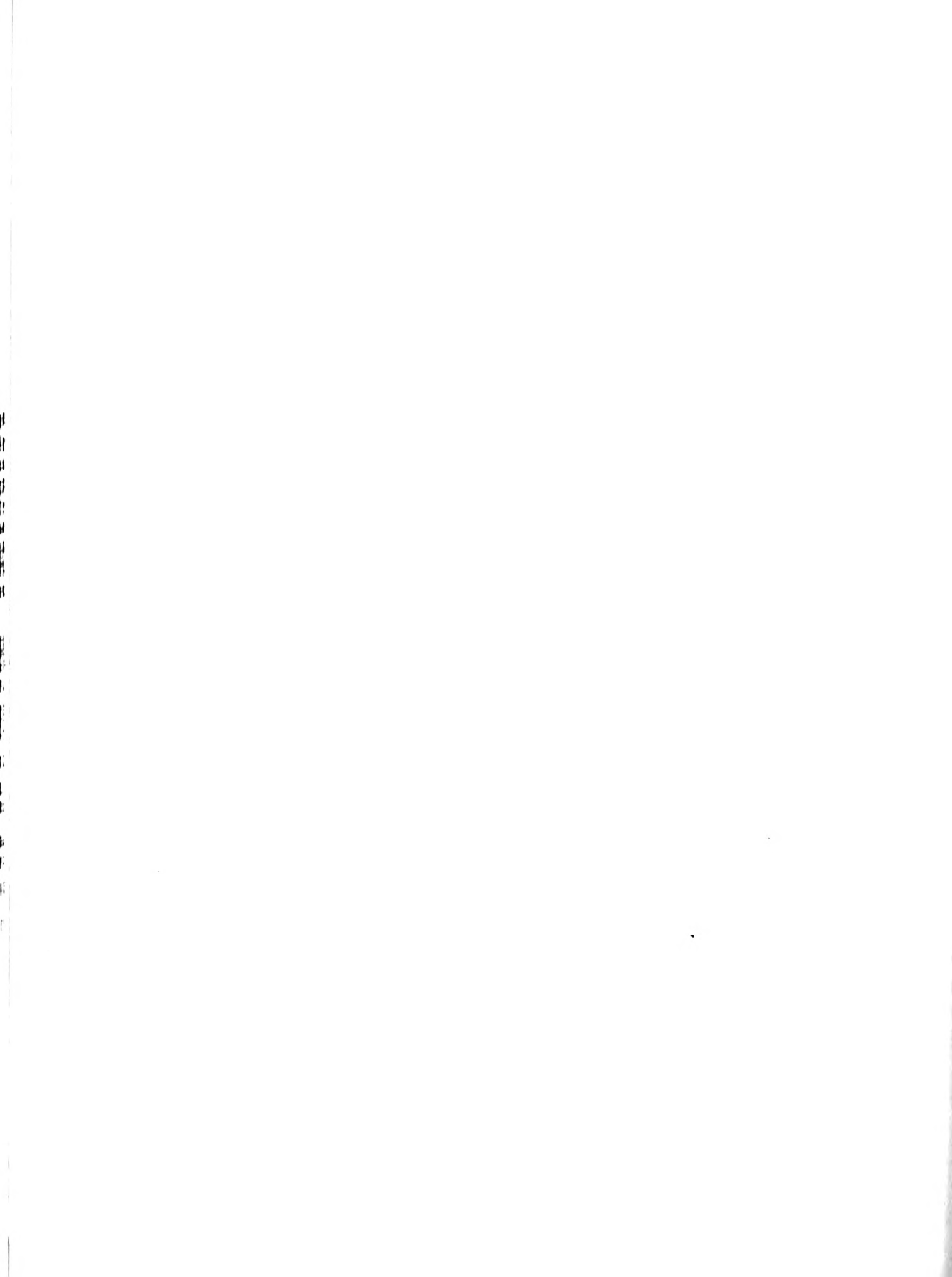
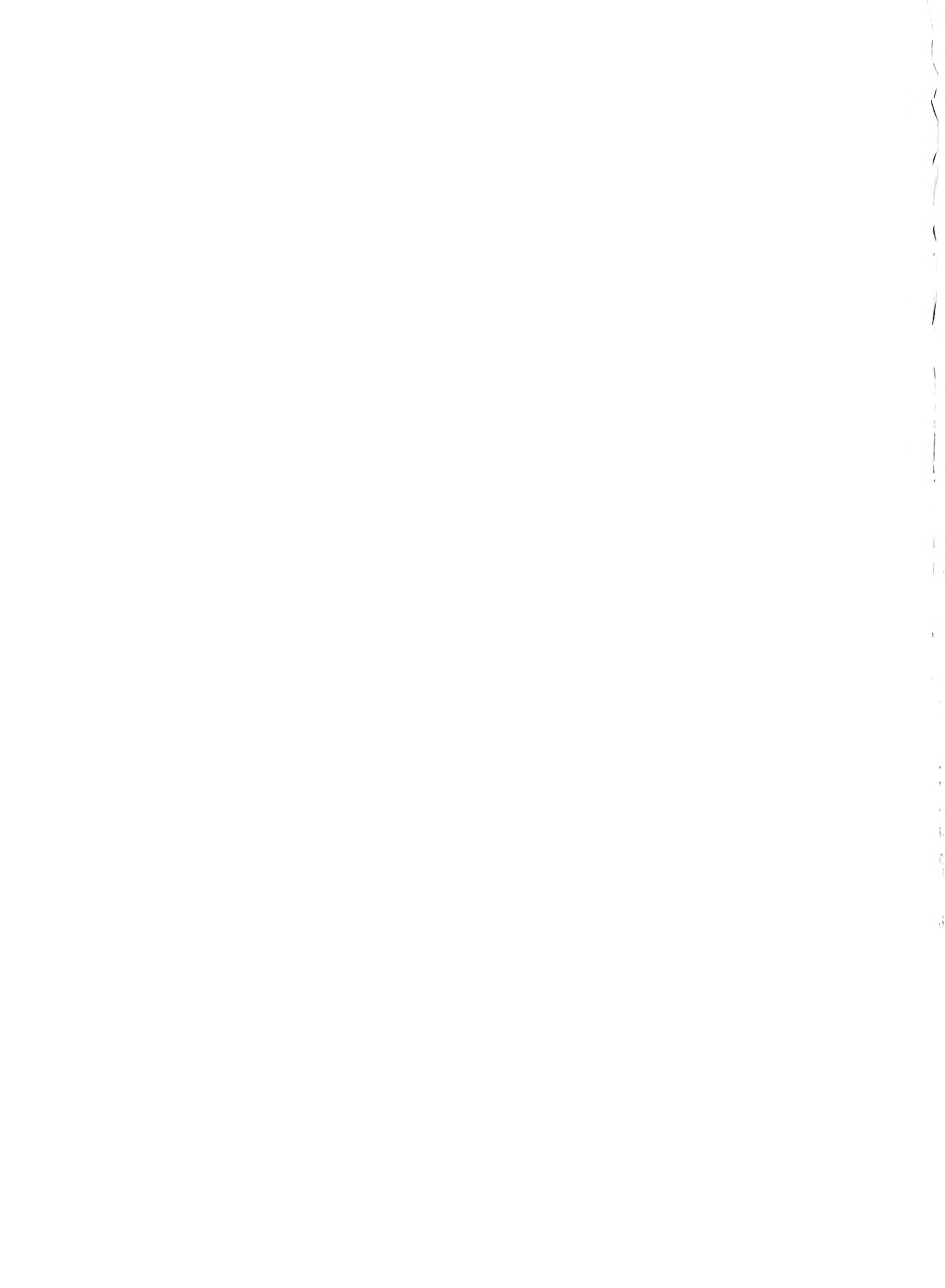


TABLE V  
YEAR FORMED, AREA, AND BONDS OUTSTANDING IN CALIFORNIA IRRIGATION DISTRICTS  
January 1, 1936

Irrigation District	Year Formed	Estimated Area		Bonds Outstanding Total	Bonds Outstanding Per Acre		Year Formed	Estimated Area		Bonds Outstanding Total	Bonds Outstanding Per Acre	
		Gross Acres	Irrigable Acres		Gross Acres	Irrigable Acres		Gross Acres	Irrigable Acres		Gross Acres	Irrigable Acres
Alpaugh	1915	8,133	7,300	207,710	25.54	28.45	1918	8,820	9,000	234,000	26.53	29.25
Alta	1888	129,300	110,000	96,000	0.74	0.87	1919	189,602	165,000	16,191,000	85.36	98.13
Anderson-Cottonwood	1914	32,000	28,000	1,128,000	35.25	40.29	1887	81,203	73,000	3,685,479	45.39	50.49
Banta-Carbena	1921	15,998	14,000	1,133,060	71.25	81.22	1917	27,665	24,000	None	None	None
Bard	1927	6,700	6,000	None	None	None	1925	25,495	18,000	1,395,000	54.72	77.50
Baxter Creek	1917	8,926	7,500	511,000	57.25	68.13	1920	2,873	2,300	186,000	64.74	80.87
Beaumont	1919	4,141	3,160	205,100	49.53	63.31	1921	266,211	164,000	8,100,000	30.43	49.39
Big Springs	1927	3,567	2,500	59,600	16.26	23.20	1918	1,503	1,300	150,000	105.45	123.08
Big Valley	1925	12,430	11,000	None	None	None	1918	694	400	50,000	72.05	125.00
Brews Valley	1889	44,000	11,740	None	None	None	1909	74,300	64,000	3,320,000	44.68	51.88
Butte Valley	1920	22,146	17,500	594,000	26.82	33.94	1919	24,000	21,300	1,095,000	45.62	51.41
Canyon-Bethany	1919	17,200	12,000	565,000	33.08	47.32	1922	53,990	None	471,500	8.73	---
Camp Far West	1924	4,985	2,660	179,000	43.82	67.32	1918	4,756	4,200	222,500	46.78	52.89
Carmichael	1916	3,135	2,500	81,000	25.84	32.44	1923	88,693	70,000	4,174,330	47.06	67.35
Carpenter	1927	1,328	1,200	192,000	144.59	160.00	1916	10,920	9,500	476,000	43.59	50.11
Citrus Heights	1920	3,167	2,000	52,000	47.99	56.30	1924	5,042	4,195	82,000	16.26	19.55
Compton-Delevan	1920	12,652	11,000	384,000	30.35	34.51	1916	13,323	12,000	156,500	13.04	13.04
Consolidated	1921	148,971	130,000	None	None	None	1918	22,895	20,000	97,000	41.96	47.85
Cordova	1919	51,603	45,000	733,000	14.20	16.96	1925	660	590	91,000	137.88	154.24
1919		5,903	5,000	103,725	17.57	20.75	1930	18,020	16,000	515,000	28.58	32.19
Deer Creek	1926	2,186	1,900	7,500	3.43	3.95	1920	15,330	14,000	None	None	None
East Contra Costa	1917	20,200	17,000	1,153,000	57.08	67.82	1916	4,000	3,000	361,000	90.25	120.33
El Camino	1921	7,546	6,500	423,000	56.06	65.08	1922	10,106	6,980	393,500	38.94	56.38
El Dorado	1925	30,702	19,000	688,000	22.41	34.57	1913	328	328	20,500	38.83	45.56
El Mido	1923	9,330	7,400	120,000	12.86	16.22	1911	5,131	4,500	67,000	13.06	14.89
Empire West Side	1931	6,460	5,500	None	None	None	1927	1,497	1,320	192,000	128.56	145.45
Fair Oaks	1917	4,268	3,700	84,000	19.68	22.70	1924	12,927	11,500	133,000	10.74	12.09
Fallbrook	1925	9,917	8,500	None	None	None	1922	7,327	6,740	62,500	75.57	84.46
Fresno	1920	241,300	210,000	None	None	None	1909	71,122	64,000	5,896,250	81.65	90.72
Glenn-Colusa	1920	122,383	110,000	1,248,454	10.26	11.35	1921	9,421	8,500	360,000	38.21	42.35
Grenada	1921	2,200	1,800	136,000	61.82	75.56	1916	12,846	12,000	None	None	None
Hollister	1923	24,453	21,000	None	None	None	1922	1,935	1,700	187,000	95.05	110.00
Hot Spring Valley	1919	9,533	8,000	83,000	8.71	10.39	1915	12,285	11,000	428,750	34.90	38.98
Imperial	1911	612,200	521,600	14,251,000	23.28	27.32	1922	5,149	2,700	320,000	101.62	118.52
Island No. 3	1921	4,620	4,000	None	None	None	1922	1,034	820	52,170	50.45	63.62
Jacinto	1917	11,732	10,500	155,287	13.24	14.79	1918	10,750	9,000	231,000	21.49	25.67
James	1920	24,395	18,300	995,000	40.79	54.37	1909	33,300	30,000	None	None	None
La Canada	1924	1,322	1,100	328,000	248.11	293.18	1927	15,000	10,000	806,000	53.73	60.60
Laguna	1920	34,858	30,000	None	None	None	1927	191,356	162,000	5,931,040	32.67	36.61
Lakehead	1923	23,283	21,000	None	None	None	1923	1,275	1,200	172,200	135.06	143.50
Lakeside	1924	320	290	31,500	98.44	108.62	1923	18,387	14,600	1,700,000	92.46	116.44
Lamesa, L.G. and S.V.	1913	19,662	13,000	1,747,768	88.89	134.44	1913	907	900	None	None	None
Linden	1929	13,770	12,000	None	None	None	1913	14,110	11,400	631,923	44.79	55.43
Lindsay-Stratmore	1915	15,234	14,000	1,427,000	93.67	101.93	1915	11,920	11,000	510,500	43.19	46.41
Littlerock Creek	1892	3,073	2,600	360,000	117.15	138.46	1920	1,828	21,000	1,160,000	53.14	55.24
Lucerne	1925	33,407	30,000	None	None	None	1920	3,490	3,000	562,000	62.38	70.25
Madera	1920	173,000	160,000	None	None	None	1924	14,290	14,000	270,000	18.89	19.29
Suma Vista Water Storage D.	1928	72,283	46,800	933,000	12.91	19.94	Totals	3,412,167	2,803,945	91,489,848		

1  
2  
3  
4  
5  
6  
7  
8  
9  
10  
11  
12  
13  
14  
15  
16  
17  
18  
19  
20  
21  
22  
23  
24  
25  
26  
27  
28  
29  
30  
31  
32  
33  
34  
35  
36  
37  
38  
39  
40  
41  
42  
43  
44  
45  
46  
47  
48  
49  
50  
51  
52  
53  
54  
55  
56  
57  
58  
59  
60  
61  
62  
63  
64  
65  
66  
67  
68  
69  
70  
71  
72  
73  
74  
75  
76  
77  
78  
79  
80  
81  
82  
83  
84  
85  
86  
87  
88  
89  
90  
91  
92  
93  
94  
95  
96  
97  
98  
99  
100









THIS BOOK IS DUE ON THE LAST DATE  
STAMPED BELOW

THIS BOOK IS DUE ON THE LAST DATE  
STAMPED BELOW

BOOKS REQUESTED BY ANOTHER BORROWER  
ARE SUBJECT TO IMMEDIATE RECALL

OCT 13 1992

RECEIVED

JUN 04 1993

PHYSICAL SCS. LIBRARY

LIBRARY, UNIVERSITY OF CALIFORNIA, DAVIS

Book Slip Series 45

PLANT  
SCIENCE  
LIBRARY

LIBRARY  
UNIVERSITY OF CALIFORNIA  
DAVIS

**111589**



3 1175 00465 2544

